

Bracknell Forest Council

# Biodiversity Action Plan 2024-2029

## Contents

1	Background.....	3
1.1	Introduction to Biodiversity Action Plans .....	3
1.2	Consultation.....	4
2	Structure of the Plan .....	4
2.1	Aim .....	4
2.2	Objectives.....	4
2.3	Targets .....	5
3	Delivery of the Plan.....	5
3.1	Partnership working.....	5
3.2	Monitoring.....	5
3.3	Delivery Plan .....	6
4	Legislation, policy and links with other plans .....	6
4.1	Environment Act 2021 .....	6
4.2	Environmental Land Management.....	6
4.3	Climate Change Strategy .....	7
4.4	Local Plan.....	7
4.5	Other linked Bracknell Forest Council strategies.....	7
4.6	Designated sites .....	8
5	BAP Habitats .....	9
6	General Themes Action Plan.....	10
6.1	Targets .....	10
7	Grassland Habitat Action Plan.....	11
7.1	Bracknell Forest BAP Species for Grassland .....	11
7.2	UKBAP priority habitats .....	12
7.3	National status .....	12
7.4	Grasslands in Bracknell Forest.....	13
7.5	Threats .....	13
7.6	Opportunities .....	13
7.7	Targets .....	13

## DRAFT

8	Woodland Habitat Action Plan .....	14
8.1	Bracknell Forest BAP Species for Woodland .....	14
8.2	UKBAP priority habitats .....	14
8.3	National status .....	15
8.4	Woodland habitats in Bracknell Forest .....	15
8.5	Threats .....	16
8.6	Opportunities .....	16
8.7	Targets .....	16
9	Rivers and Wetlands Habitat Action Plan .....	17
9.1	Bracknell Forest BAP Species for Rivers and Wetlands .....	17
9.2	UKBAP priority habitats .....	18
9.3	National status .....	18
9.4	Rivers and wetland habitats in Bracknell Forest.....	18
9.5	Threats .....	18
9.6	Opportunities .....	19
9.7	Targets .....	19
10	Heathland Habitat Action Plan.....	20
10.1	Bracknell Forest BAP species for heathland .....	20
10.2	UKBAP priority habitats .....	21
10.3	National status .....	21
10.4	Heathland habitats in Bracknell Forest.....	21
10.5	Threats .....	21
10.6	Opportunities .....	21
10.7	Targets .....	22
11	Farmland Habitat Action Plan .....	22
11.1	Bracknell Forest BAP species for farmland .....	22
11.2	UKBAP priority habitats .....	23
11.3	Farmland habitats in Bracknell Forest .....	23
11.4	Threats .....	23
11.5	Opportunities .....	23
11.6	Targets .....	23
12	Urban Habitat Action Plan .....	24
12.1	Bracknell Forest BAP species for urban areas.....	24
12.2	UKBAP priority habitats .....	25

## DRAFT

12.3	Urban habitats in Bracknell Forest .....	25
12.4	Threats .....	25
12.5	Opportunities .....	26
12.6	Targets .....	26
Appendix 1: Bracknell Forest Borough Information .....		27
Appendix 2: Glossary .....		27
Appendix 3: Designated sites .....		29
Appendix 4: Bracknell Forest BAP Species Selection Process .....		31
Appendix 5: Relevant Legislation, Policies and Plans .....		31
Legislation .....		31
Planning Policy .....		33
National Strategies .....		38
Bracknell Forest Council Plans and Strategies .....		40
Local Strategies .....		42
References.....		46

### Foreword

*Foreword to be added.*

## 1 Background

### 1.1 Introduction to Biodiversity Action Plans

Biodiversity Action Plans were first developed following the 1992 United Nations 'Earth Summit'.

The government published the UK Biodiversity Action Plan in 1994. It provided plans for the conservation of nature across the UK. Since then, there have been changes in policy and the UKBAP was not continued after 2012. However, the priority habitats and species first identified in the UKBAP are still used to direct action for nature recovery. In this report they are mainly referred to as UKBAP species and habitats, but are also known as priority species and habitats, Habitats and Species of Principle Importance, or Section 41 species and habitats.

Bracknell Forest Council launched the first Biodiversity Action Plan (BAP) for the borough in 1997. The BAP is a partnership plan. It demonstrates the commitment of the Council and local people to protecting and enhancing nature in the borough. The BAP has changed over time to become a habitat-based plan. The 2024-2029 BAP is the 6th version.

## 1.2 Consultation

The BAP 2024-2029 has been developed by Bracknell Forest Council following consultation with partner organisations, the Bracknell Forest Nature Partnership and the public. The plan aims to reflect the views and priorities of the community.

## 2 Structure of the Plan

The plan is split into a General Themes Action Plan and 6 Habitat Action Plans. The Action Plans are a series of 'SMART' targets. Each Habitat Action Plan has flagship species to focus interest. Information about how the BAP species were chosen is in Appendix 4: Bracknell Forest BAP Species Selection Process.

In previous years each Habitat Action Plan had its own objectives and targets. For 2024-2029, the objectives have been brought together into an overarching list, and each Habitat Action Plan consists of a list of targets.

### 2.1 Aim

The aim of the BAP is to conserve and enhance biodiversity within Bracknell Forest Borough.

This will be achieved through:

- Targeted monitoring
- Positive management
- Effective communication
- Proactive policies

### 2.2 Objectives

The BAP has the following objectives:

- (A) Track the condition of designated sites**
- (B) Monitor key sites, features and indicator species to understand trends and inform management**
- (C) Enhance, restore or create high quality habitats, through Biodiversity Net Gain (BNG) and Passive Open Space of Value (OSPV) projects and other project routes**
- (D) Designate the best sites for nature**
- (E) Improve habitat connectivity**
- (F) Enhance sites for wildlife by providing opportunities for nesting, foraging, hibernation and movement**
- (G) Build awareness and engage communities**
- (H) Contribute to related strategic plans and activities within Bracknell Forest and across administrative boundaries**
- (I) Contribute to climate change mitigation (lowering emissions and/or carbon storage)**

## **(J) Contribute to climate change adaptation (improving the resilience of habitats, species and people to a changing climate)**

The objectives link through to each of the targets in the plan. This is shown under each target.

### **2.3 Targets**

Targets are set within the Habitat Action Plans. To ensure that progress can be achieved and reported against, the targets use SMART criteria:

- Specific
- Measurable
- Attainable
- Relevant
- Time-bound

## **3 Delivery of the Plan**

### **3.1 Partnership working**

The success of the Biodiversity Action Plan is dependent on local people and organisations working together.

#### **Bracknell Forest Nature Partnership**

The Bracknell Forest Nature Partnership oversees the implementation of the plan. The partnership is made up of local people and organisations with an interest in nature conservation. This includes local environmental groups, wildlife charities and Town and Parish Councils. The partnership has been closely involved with the review of previous targets and development of new targets.

#### **Berkshire Local Nature Partnership**

This is the nature partnership at a county level. Members include government bodies, wildlife charities, local and national authorities and businesses. The partnership has identified Biodiversity Opportunity Areas (BOAs), which are key areas to focus nature conservation efforts at a landscape scale. A map showing BOAs within Bracknell Forest is in Appendix 3: Designated sites.

#### **Bracknell Forest Council**

Bracknell Forest Council acts as a coordinator for the Biodiversity Action Plan. The council hosts and chairs the Bracknell Forest Nature Partnership. The council gathers updates and reports on progress against the BAP targets.

The BAP forms part of the statutory duty for all public authorities to consider what they can do to conserve and enhance biodiversity.

The council also plays a central role in the local community through education, public open space, highways, social care and many other roles that provide opportunities for biodiversity. As a Unitary Authority, Bracknell Forest Council is also responsible for the local planning process. Planning policy plays a key role in the protection and enhancement of biodiversity.

### 3.2 Monitoring

The Bracknell Forest Nature Partnership updates progress against the targets at 6-monthly meetings. Bracknell Forest Council collates progress updates and produces a mid-term review and end of term review.

Thames Valley Environmental Records Centre (TVERC) collates biological records across Berkshire and Oxfordshire. TVERC provide Bracknell Forest Council with data on species and habitats through a service level agreement. TVERC also survey Local Wildlife Sites (LWS) and Local Geological Sites (LGS). An independent panel assesses this information to review the designation of these important local sites.

### 3.3 Delivery Plan

A detailed plan will be produced in the first year of the BAP to provide options for implementing each of the targets, identify who may be involved and identify potential funding.

## 4 Legislation, policy and links with other plans

This section outlines some key areas of legislation and policy which relate to the Biodiversity Action Plan. The plans and objectives of partner organisations have also been incorporated into this plan where possible. A list of plans and policies is in Appendix 5: Relevant Legislation, Policies and Plans.

### National

#### 4.1 Environment Act 2021

The Environment Act 2021 has been described by Tony Juniper, Chair of Natural England, as “the most ground-breaking piece of environmental legislation in many years” (Natural England, 2021). It brings in new targets, tools and requirements for nature recovery, some of which are still in development at the time of writing the BAP 2024-2029. The work areas most closely linked to the BAP are Local Nature Recovery Strategies and Biodiversity Net Gain.

#### Local Nature Recovery Strategies

Local Nature Recovery Strategies (LNRSs) are county-scale spatial strategies to recover nature across England. Together, they will cover the country in a Nature Recovery Network. The Royal Borough of Windsor and Maidenhead is leading the development of the Berkshire LNRS. The plan will be developed with input from a wide range of stakeholders. The result will be a strategic plan with mapped priorities and actions for nature recovery. It is anticipated it will be published in spring 2025.

#### Biodiversity Net Gain

Biodiversity Net Gain (BNG) is a way to contribute to the recovery of nature while developing land. The new legislation will require all new developments to leave biodiversity in a measurably better state than it was before. Habitats can be created or enhanced on the development site, off-site, or through a combination of both. Biodiversity Net Gain becomes mandatory for many developments in 2024.

## 4.2 Environmental Land Management

The government is undertaking a significant reform of agricultural policy and spending in England. Environmental Land Management (ELM) schemes will pay farmers to provide environmental goods and services alongside food production. These include protecting, restoring and creating wildlife rich habitats, improving water quality, increasing resilience to floods and droughts, increasing tree and woodland cover and storing carbon (Defra, 2023, A).

## Bracknell Forest

### 4.3 Climate Change Strategy

In September 2023, Bracknell Forest Council declared a Climate and Biodiversity Emergency. This included a commitment to achieve net-zero greenhouse gas emissions across the borough as close to 2030 as possible.

The council has a Climate Change Strategy (current version 2020-2024, upcoming version 2024-2028), and an associated Action Plan. The strategy has two main strands:

- Reduce carbon emissions that are under the council's control
- Influence and lead community action against climate change

The Joint Climate Action Board unites organisations in Bracknell Forest. The Board will play a central role in developing a Community Climate Emergency Strategy. It is supported by working groups from different sectors, including a biodiversity working group.

### 4.4 Local Plan

The emerging Bracknell Forest Local Plan (BFLP) provides the strategy for the growth of the borough up to 2037. At the time of writing the BAP, the Local Plan is at examination stage and it is anticipated to be adopted in 2024. In particular the BFLP:

- sets out the strategy for the level and distribution of development in the Borough;
- allocates sites for specific uses, including housing and economic development; and
- includes policies used to determine planning applications.

The plan vision includes protecting and enhancing green networks and securing a net gain in biodiversity. The key policy for biodiversity defines the expectations for developments to achieve net gain, provide suitable ecological information and work in accordance with the mitigation hierarchy to first avoid, then mitigate and then compensate for negative impacts on biodiversity.

### 4.5 Other linked Bracknell Forest Council strategies

In addition to the Climate Change Strategy and Local Plan discussed above, this plan supports the following council plans as part of its developing overall green infrastructure strategy:

- Council Plan 2023-2027
- Parks and Open Spaces Strategy (2012)
- Tree Strategy (2017)
- Rights of Way Improvement Plan 2017-2027
- Local Transport Plan 2011-2026, and any replacement strategy

## DRAFT

- Relevant Development Plan policies
- Planning Obligations Supplementary Planning Document (2015), and any subject replacement SPD
- Thames Basin Heaths Special Protection Area Supplementary Planning Document (2018)

### 4.6 Designated sites

Designated sites are areas of special importance for nature, due to their rarity or importance for wildlife. Sites can be designated for their importance for nature at the local, national and international level. The following types of designated sites can be found in Bracknell Forest:

- Local Wildlife Site (LWS) – locally designated areas supporting important and rare habitats and species
- Local Nature Reserve – sites designated by local authorities as important for wildlife, geology, education and enjoyment
- Site of Special Scientific Interest (SSSI) – nationally designated as the best examples of the UK's flora, fauna, geological or physiological features
- Special Protection Area (SPA) – SPAs are strictly protected at a national level as the most important areas of habitat for certain rare and migratory birds
- Special Area of Conservation – SACs are a national-level network of high-quality sites supporting important habitats and species

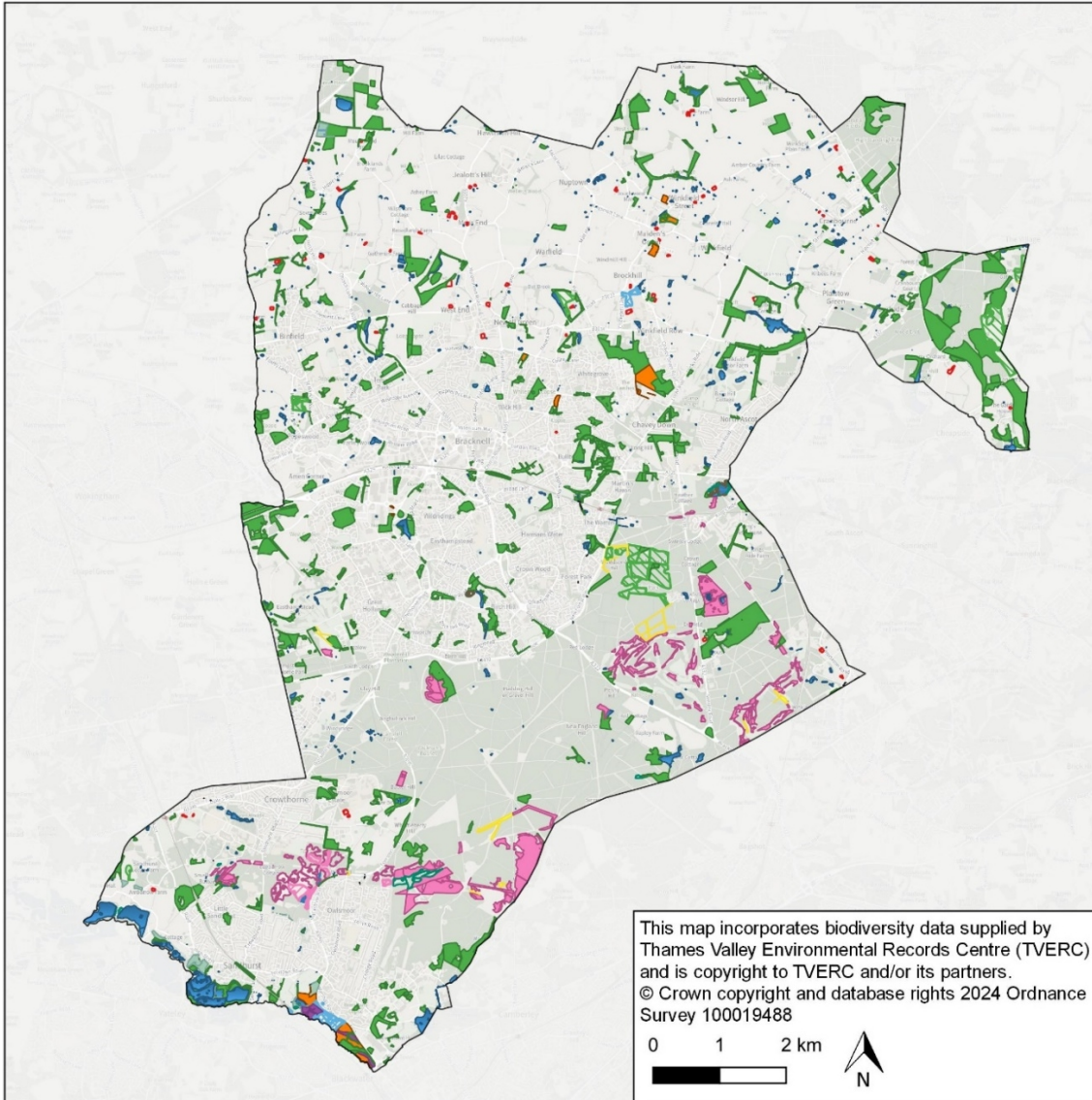
For more information and a map of designated sites see Appendix 3: Designated sites.

There is opportunity to designate new sites and also to enhance non-designated sites for their habitat and species value. This may include open spaces of public value, verges, incidental open space areas, parkland and Suitable Alternative Natural Greenspaces (SANGs).



## 5 BAP Habitats

TVERC has mapped habitats using field survey data and interpretation of aerial photography. The map below shows habitats identified as Section 41 Habitats of Principal Importance (also known as UKBAP priority habitats). Many areas would require on-the-ground survey to confirm that they support the priority habitat shown.



Borough boundary	Oligotrophic and dystrophic lakes
<b>Habitats of Principle Importance</b>	Purple Moor Grass and Rush Pastures
Coastal and Floodplain Grazing Marsh	Reedbeds
Dry heaths; lowland (H4030)	Rivers
Eutrophic Standing Waters	Traditional Orchards
Lowland Beech and Yew Woodland	Wet heathland with cross-leaved heath; lowland (H4010)
Lowland Dry Acid Grassland	Wet heathland with cross-leaved heath; upland (H4010)
Lowland Fens	Wet Woodland
Lowland Heathland	Wood-Pasture and Parkland
Lowland Meadows	
Lowland Mixed Deciduous Woodland	
Mesotrophic Lakes	

Basemap - OS Light 27700

## 6 General Themes Action Plan

The General Themes Action Plan covers factors that influence the conservation of all species and habitats. The targets take a borough-wide, rather than habitat-specific, view. Key considerations in the General Themes section are:

### **Network of designated sites**

As described in Section 4.6, designated sites are some of the most important sites for wildlife. Their protection is vital for nature conservation. It is important that sites are appropriately designated, monitored and that a proactive approach is taken to improve the management of sites, especially where there are concerns they may be deteriorating.

### **Information**

Up-to-date information is essential to take the correct decisions and actions. This information may be collected by volunteer recorders, consultant ecologists, organisations, landowners and the public more widely.

### **Community engagement**

Education and engagement are vital to achieve the aims of the BAP and ensure it has a long-lasting impact. Local people have a key role to play through practical volunteering, surveying and raising awareness. Local businesses, schools, charities, community groups and landowners all have different opportunities to protect and enhance nature.

### **Strategy & multi-functional benefits**

Activities to work towards the BAP targets will also contribute to the aims of other strategic plans, and vice versa. Linked strategic actions may include providing good quality open space and addressing the causes and impacts of climate change.

Work to conserve and recover nature at the local level will also contribute to ambitions across Berkshire and across the country. The development of the Local Nature Recovery Strategy provides a new opportunity for strategic planning and action. As the plan is under development, there is currently an opportunity to shape its development. There will then be opportunities to take action, though the precise nature of these actions is not yet known.

### **Resilience and climate change**

Resilience is the ability to respond to change or disturbance, by resisting damage and recovering quickly. The diversity and connectivity of our species and habitats are factors which affect the resilience of nature in the borough and beyond. Pressures which species and habitats need to be resilient to, such as wind, fire or drought, may become more frequent with climate change. Therefore, working on habitat connectivity and nature conservation is essential in reducing the impacts of climate change.

Natural England and RSPB (2019) have assessed each priority habitat for the potential impacts of climate change. These are discussed in each habitat action plan.

## 6.1 Targets

### **1. Track condition of Sites of Special Scientific Interest (SSSIs)**

Contributes to objective: **(A)**

### **2. Survey each Local Wildlife Site every 10 years**

**DRAFT**

Contributes to objective: **(A) (B)**

**3. 75% Local Wildlife Sites in positive management**

Contributes to objective: **(A) (B)**

**4. Review the network of Local Nature Reserves and designate appropriate sites**

Contributes to objective: **(A) (D)**

**5. Produce an annual report on the state of nature in Bracknell Forest**

Contributes to objective: **(B) (H)**

**6. Promote wildlife recording including submitting records to TVERC**

Contributes to objective: **(B) (G)**

**7. Involve educational institutions in monitoring and management of biodiversity**

Contributes to objective: **(B) (G)**

**8. Hold or publish at least 30 events and articles each year promoting the importance of biodiversity within the borough (see also individual habitat plans), including links to climate change where possible**

Contributes to objective: **(G) (H) (I)**

**(J)**

**9. Host at least 8000 hours of volunteering for nature each year**

Contributes to objective: **(C) (F) (G)**

**(J)**

**10. Bring together, review and enhance the plans and strategies for green infrastructure in Bracknell Forest**

Contributes to objective: **(H) (I)**

**(J)**

**11. Secure and monitor at least 10% biodiversity net gain on relevant developments**

Contributes to objective: **(C) (H)**

**(J)**

**12. Engage with the development of the Berkshire Local Nature Recovery Strategy (LNRS)**

Contributes to objective: **(H)**

**13. Support the delivery of the Berkshire Local Nature Recovery Strategy (LNRS)**

Contributes to objective: **(H)**

**14. Support and work with the Joint Climate Action Board (JCAB), including the biodiversity working group**

Contributes to objective: **(G) (H) (I)**

**(J)**

## 7 Grassland Habitat Action Plan

### 7.1 Bracknell Forest BAP Species for Grassland

These species have been chosen to represent and promote the habitat. They will be included in projects to protect and enhance important grassland habitats in the borough.

#### **Harvest Mouse (*Micromys minutus*)**

Status: A UKBAP species, thought to have become much more scarce in recent years and requiring conservation efforts to reduce the decline.

Habitat requirements: Habitats with structural grasses, including tussocky grasslands, hedgerows, field margins, road verges and reedbeds.

#### **Bumblebees (*Bombus spp.*)**

Status: Bumblebees have been in decline over the past century. Two species became extinct in the UK during the 20<sup>th</sup> century.

Habitat requirements: Habitats with plenty of flowers during the whole of their active phase (spring until late summer).

#### **Ragged Robin (*Lychnis flos-cuculi*)**

Status: Widely distributed in the UK but declining and assessed as Near Threatened in England. Localised within the borough and largely reliant on protected sites.

Habitat requirements: Damp grassland managed by cutting or grazing to prevent more vigorous plants from becoming dominant.

#### **Devil's Bit Scabious (*Succisa pratensis*)**

Status: A plant of species-rich grasslands which have significantly declined over the past century.

Habitat requirements: Found in a range of habitats including neutral, calcareous and acid grasslands, purple moor-grass and rush pasture, fens and damp woodlands. In Bracknell Forest, mainly found in acid grasslands in the south of the borough where grazing keeps grasses in check.

Grassland species info from: Mammal Society (no date), Bumblebee Conservation Trust (2021), Freshwater Habitat Trust (no date), Magnificent Meadows (no date) and previous Bracknell Forest BAP.

### 7.2 UKBAP priority habitats

- Lowland dry acid grassland
- Lowland meadows
- Coastal and floodplain grazing marsh
- Purple moor grass and rush pasture

### 7.3 National status

Grassland covers 38% of England, with 5% of this being 'semi-natural' and 32% 'improved'. Improved grassland refers to modifying grassland to improve it for agriculture. It is unimproved grasslands, that have not been heavily modified or fertilised, which provide better grassland habitats for plants and wildlife. Grassland extent declined over the 20<sup>th</sup>

century. This loss slowed towards the 21<sup>st</sup> century, though underlying this trend is an indication that the condition, or quality, of broad grassland habitats has declined in recent years (Plantlife International, 2023).

## 7.4 Grasslands in Bracknell Forest

Grasslands in the borough reflect the underlying geology. Grasslands are neutral and more extensive in the north of the borough where agriculture is more prevalent. In the south of the borough, acid grasslands form mosaics with heathland.

## 7.5 Threats

Species-rich grasslands may be lost directly due to arable conversion or development. They are also sensitive to changes that affect the balance between wildflower and grassland species. Factors which can affect this include:

- Lack of management leading to scrub encroachment and invasion of coarse grasses. These can outcompete wildflower species.
- Overgrazing, particularly by horses, resulting in loss of species and trampling.
- Agricultural improvement through addition of fertiliser, reseeding or treatment with herbicide. These actions remove wildflower species and replaces them with coarse grasses.
- Invasive species such as Goat's Rue and Pampas grass

### Impacts of climate change on priority habitats

Lowland dry acid grassland is the grassland priority habitat most commonly found in Bracknell Forest. This has been assessed as having a low sensitivity to climate change. Nonetheless, hotter, drier summers may affect the composition of species, such as favouring more drought tolerate species. Increased incidence of fires may also affect community composition and increase vulnerability to invasive species (Natural England and RSPB, 2019).

## 7.6 Opportunities

- Enhancement of existing poor-quality grasslands within public open space, with biodiversity net gain providing a driver for better quality habitats on development sites and via off-site projects, in accordance with the emerging Local Access to Nature standard
- Enhancement of grasslands for nature on agricultural land, supported by agri-environment schemes
- Increasing the diversity of the extensive horse paddocks in the borough
- Public interest in wildflowers and pollinators has increased support for grassland restoration in recent years

## 7.7 Targets

**15. Design and undertake regular surveys of key grassland sites/species to understand trends and feed into annual report (see General Themes target 5)**

Contributes to objective: **(B)**

**16. Enhance, restore or create 15ha grassland habitats**

Contributes to objective: **(C)**

(J)

**17. Survey 5ha grassland to propose as Local Wildlife Sites**

Contributes to objective: **(B) (D)**

**18. Make management advice available to grassland landowners**

Contributes to objective: **(C) (G)**

**19. Raise awareness of grassland biodiversity within annual events and articles  
(see General Themes target 8)**

Contribute to objective: **(G)**

## **8 Woodland Habitat Action Plan**

### **8.1 Bracknell Forest BAP Species for Woodland**

These species have been chosen to represent and promote the habitat. They will be included in projects to protect and enhance important woodland habitats in the borough.

#### **Bullfinch (*Pyrrhula pyrrhula*)**

Status: A UKBAP species, classified as Amber under the UK Birds of Conservation Concern. Numbers in the UK declined steeply in the 1970s. Although there has been an improvement more recently, the population is still about 40% lower than in the 1960s. Present in the borough in low numbers.

Habitat requirements: Feeds on buds and fruit in woodlands, hedgerows, parklands, gardens and orchards. Usually nests in shrubs, such as hawthorn and blackthorn.

#### **Wild Service Tree (*Sorbus torminalis*)**

Status: Widespread but not common in England. Generally confined to ancient woodlands and hedges, particularly on heavy clay soils.

Habitat requirements: Grows best in clay and lime-based soils. In Bracknell Forest this species appears to tolerate the neutral and clay soils in the north of the borough.

#### **Noctule Bat (*Nyctalus noctula*)**

Status: A UKBAP species and European protected species. Relatively widespread but has declined in Britain due to loss of feeding habitat and suitable trees for roosting. Found throughout the borough but roosts are rarely identified.

Habitat requirements: Noctules typically roost in holes in trees. They forage for insects in open areas, woodlands, wetlands and grasslands.

#### **Stag beetle (*Lucanus cervus*)**

Status: A UKBAP species which is declining across much of Europe. London and the Thames Valley area are a hotspot for stag beetles.

Habitat requirements: The natural habitat of stag beetles is woodland, but they also live in hedgerows, orchards, parks and gardens. The larvae rely on dead wood, particularly of oak trees and other broad-leaved species.

Woodland species info from: Stanbury and others (2021), BTO (no date, A), The Wildlife Trusts (no date, A & B), Woodland Trust (no date, A), Bat Conservation Trust (2010), Mammal Society (no date, B), Hendry (no date) and previous Bracknell Forest BAP.

## 8.2 UKBAP priority habitats

- Lowland beech and yew woodland
- Lowland mixed deciduous woodland
- Wet woodland
- Wood pasture and parkland
- Traditional orchards
- Hedgerows

Ancient woodland describes areas which have been woodland since 1600AD. These areas may now be one of the priority habitats above or may be another type of woodland habitat such as conifer plantation. Regardless of the current type of woodland cover, ancient woodlands are defined as irreplaceable habitats. They are given special protection in planning policies and Biodiversity Net Gain.

## 8.3 National status

Following declines in previous centuries, over the last 100 years the UK's woodland cover has more than doubled. Woodland today covers 13.2% of the UK's land, up from 12% in 1998. Half of this is native, the other half mainly non-native conifer plantation. Within this, ancient woodland covers 2.5% of the UK's land (Reid and others, 2021).

## 8.4 Woodland habitats in Bracknell Forest

### Woodlands

Bracknell Forest has a tree canopy cover (woodland and other trees) of 35%. This is the second highest of the local authorities in England (Friends of the Earth, 2023). Some of the largest areas of woodland are Swinley Forest and Crowthorne Woods. These are owned by the Crown Estate and are predominantly conifer plantation. There are Local Wildlife Sites across the borough which support broadleaved woodland, often called 'copses', such as Long Copse and Tarman's Copse.

### Traditional Orchards

Traditional orchards are a hotspot for biodiversity. They provide a mix of habitats such as fruit trees, grassland, hedges, scrub, deadwood and sometimes ponds. Since the 1950s, 90% of traditional orchards in England and Wales have been lost (PTES, no date). Natural England data maps 65 traditional orchards in Bracknell Forest, but only a small number of these have been verified on the ground. There are community orchards at Larks Hill, Lily Hill Park, Jealott's Hill and Buckler's Park.

### Hedgerows

There are half a million miles of hedgerow in the UK. Hedges have declined in the last century, although the loss has slowed since the 1990s. Hedges provide a variety of wildlife with food, shelter and 'corridors' to move through the landscape (Woodland Trust, no date, B). There is currently not an estimate for the overall extent of hedgerows in Bracknell Forest, but the northern parishes where there is more agriculture hold the main resource.

## **Ancient & Veteran Trees**

Old trees can develop features such as decay, fungus, deadwood, holes and cavities. This creates a complex habitat which can support many species. The UK is very important for ancient and veteran trees, and Windsor Forest is home to many of these trees. It is recognised as a Special Area of Conservation for its valuable beech and oak woodland habitat which supports rare species such as the violet click beetle. Veteran trees have been identified by the Crown Estate within Windsor Forest, and by a range of groups and volunteers across the borough.

## **8.5 Threats**

Woodland habitats in the borough are threatened by:

- Isolation from other habitats
- Invasive non-native species, in particular Rhododendron and Laurel which create dense shade and prevent understory species and new young trees from growing
- Lack of management
- Degradation by human activities such as dumping, fires and recreational pressures
- Deer browsing and grey squirrel damage
- Inappropriate management e.g., hedge cutting
- Removal of deadwood
- Development, particularly for veteran trees and orchards
- Pollution

## **Impacts of climate change on priority habitats**

Wet woodland is assessed as moderately sensitive to climate change, while deciduous woodland, wood pasture, orchards and hedgerows have a low sensitivity. Woodlands are likely to be most threatened by more frequent and severe droughts. Pests and diseases may be more frequent as stressed trees are more susceptible, and pest insects are likely to benefit from climate change. Grey squirrel and deer are also likely to benefit from climate change which may increase pressure and reduce natural regeneration. Wind-throw may be more common if the UK becomes more stormy (Natural England and RSPB, 2019).

## **8.6 Opportunities**

The government has a target to increase tree cover (which includes woodlands and smaller areas of trees) in England from 14.5% in 2023 to 16.5% in 2050 (Natural England and Forestry Commission, 2023). There are existing grant schemes for woodland creation and tree planting, and new opportunities from Biodiversity Net Gain and carbon markets. Agri-environment schemes provide incentives to landowners for activities such as woodland creation, woodland and hedgerow management and improving tree health (Defra, 2023, A).

## **8.7 Targets**

**20. Design and undertake regular surveys of key woodland sites/species to understand trends and feed into annual report (see General Themes target 5)**

Contributes to objective: **(B)**

**21. Enhance, restore or create 25ha woodland habitats, including ancient woodland sites where possible**



## DRAFT

Contributes to objective: (C) (I)

(J)

### **22. Enhance, restore or create 5km native hedgerow**

Contributes to objective: (C) (E) (F) (I)

(J)

### **23. Survey 5ha woodland to propose as Local Wildlife Sites**

Contributes to objective: (B) (D)

### **24. Consolidate veteran tree data, identify gaps and undertake targeted surveys to identify veteran trees**

Contributes to objective: (B) (G)

### **25. Identify 50 trees with potential to become veterans and improve management**

Contributes to objective: (C)

### **26. Plant trees in an open, parkland-style setting at 5 sites**

Contributes to objective: (C) (I)

### **27. Install loggeries and bat roosting opportunities at 30 sites with limited deadwood**

Contributes to target: (F)

### **28. Make management advice available to woodland and hedgerow landowners**

Contributes to objective: (C) (G) (I)

(J)

### **29. Raise awareness of woodland biodiversity within annual events and articles (see General Themes target 8)**

Contributes to objective: (G)

### **30. Review Bracknell Forest Borough Tree Strategy**

Contributes to objective: (H) (I)

(J)

## **9 Rivers and Wetlands Habitat Action Plan**

### **9.1 Bracknell Forest BAP Species for Rivers and Wetlands**

These species have been chosen to represent and promote the habitat. They will be included in projects to protect and enhance important wetland habitats in the borough.

#### **Great Crested Newt (*Triturus cristatus*)**

Status: A UKBAP species and European Protected Species. Widespread in the UK but with a patchy distribution. Populations have disappeared from sites across Europe due to habitat loss. Found across Bracknell Forest where there are ponds.

## DRAFT

Habitat requirements: Great crested newts breed in ponds in the spring, favouring large ponds with lots of weeds but no fish. The rest of the year they rely on woodland, hedgerow, marsh and tussocky grassland habitats for feeding and sheltering.

### **Brown Trout (*Salmo trutta*)**

Status: A UKBAP species, threatened by overfishing, habitat loss and climate change (as it relies on cold water habitats). In Bracknell Forest, limited to the Wish Stream and possibly the River Blackwater.

Habitat requirements: Unpolluted, free-flowing rivers and streams with gravel beds for spawning and aquatic plants providing invertebrate prey.

### **Kingfisher (*Alcedo atthis*)**

Status: In 2021, Kingfisher was moved from Amber to Green under the UK Birds of Conservation Concern. Listed on Schedule 1 of the Wildlife and Countryside Act 1981 which provides additional protections from disturbance.

Habitat requirements: Slow-moving water with low hanging branches or posts to use as hunting perches. Kingfishers tunnel into high sided riverbanks to make a chamber for their nests.

Rivers and wetlands species info from: Froglife (no date), The Wildlife Trusts (no date, C), Stanbury and others (2021), Woodland Trust (no date, C &D) and previous Bracknell Forest BAP.

## **9.2 UKBAP priority habitats**

- Eutrophic standing waters
- Ponds
- Mesotrophic lakes
- Rivers
- Lowland fens
- Lowland raised bog
- Reedbeds

## **9.3 National status**

Freshwater, wetlands and floodplains cover approximately 5% of the UK. The extent of these habitats increased by 25% between 1990 and 2019. Many former quarries have been converted to artificial lakes which provide new habitats (Office for National Statistics, 2022). However, only 14% of rivers and lakes are in good ecological health (achieving 'good ecological status' in 2019) (Environment Agency and Natural England, 2022).

## **9.4 Rivers and wetland habitats in Bracknell Forest**

Many areas in the north of the borough were historically dug for clay to make bricks. This has left many ponds in Binfield, Warfield and Winkfield.

Two main rivers flow through Bracknell Forest. The Cut is a tributary of the River Thames, which flows through the northern parishes. It is partly fed by the Bullbrook stream. The River Blackwater flows along the southern boundary of Sandhurst, partly fed by the Wish Stream. It is a tributary of the River Loddon.

Along the River Blackwater, extensive gravel extraction has created large lakes. These have varying conditions for biodiversity. Wetland habitats are focused, although not limited to, around these areas.

## 9.5 Threats

The borough's rivers and lakes are mainly threatened by activities within their floodplains or catchments, whereas ponds and wetlands tend to be more affected by a lack of management. Key issues include:

- Nutrient enrichment and pollution – this often reaches the river at specific points, known as outfalls
- Inappropriate management of waterside vegetation
- Invasive non-native species
- Artificial structures or alterations
- Formalisation of natural waterbodies
- Effects on hydrology from surrounding land use

### Impacts of climate change on priority habitats

Rivers, streams and open waters have a high sensitivity to climate change, and reedbeds a moderate level. In rivers and lakes, changes to temperature and hydrological regimes are predicted. Warmer water temperatures will affect species adapted to cold conditions, and droughts may reduce available habitat space and water quality. There may be an increase in problems associated with algal blooms in lakes. Heavy rainfall events may increase runoff. Invasive species may spread further or more quickly (Natural England and RSPB, 2019).

## 9.6 Opportunities

The role wetlands play in flood alleviation may provide opportunities for habitat creation and restoration, often known as 'nature-based solutions'. In recent years, there has been much greater public awareness of pressures on rivers such as pollution, which may provide drivers for protection and restoration. The Government's Environmental Improvement Plan (HM Government, 2023) includes a goal for clean and plentiful water, with associated targets and commitments such as reducing water use, restoring 75% of water bodies to good ecological status and reducing pollution from agriculture. Biodiversity net gain will provide a driver for better quality habitats on development sites and via off-site projects. There is a specific watercourse assessment module for developments affecting rivers and streams (Defra, 2023, B). Agri-environment schemes provide incentives to landowners to take action to improve water quality and biodiversity in watercourses, such as creating riparian buffers, and support wetland habitats, for example by creating and managing reedbeds (Defra, 2023, A).

## 9.7 Targets

### **31. Design and undertake regular surveys of key wetland sites/species to understand trends and feed into annual report (see General Themes target 5)**

Contributes to objective: **(B)**

### **32. Monitor outfalls at least every 4 years**

Contributes to objective: **(B) (G) (H)**

### **33. Enhance, restore or create 20 ponds**

## DRAFT

Contributes to objective: (C) (F) (I)

(J)

### 34. Restore or enhance 2km of river or stream habitat

Contributes to objective: (C) (E) (F)

(J)

### 35. Tackle invasive Himalayan Balsam at 5 sites

Contributes to objective: (C)

(J)

### 36. Review access patterns at two river or wetland sites and adapt access management

Contributes to objective: (C) (G)

### 37. Make management advice available to riverside landowners

Contributes to objective: (C) (G)

### 38. Raise awareness of wetland biodiversity, including issues facing rivers and opportunities for communities to get involved, within annual events and articles (see General Themes target 8)

Contributes to objective: (G)

### 39. Engage with the Catchment Partnership and its strategic plans

Contributes to objective: (H)

## 10 Heathland Habitat Action Plan

### 10.1 Bracknell Forest BAP species for heathland

These species have been chosen to represent and promote the habitat. They will be included in projects to protect and enhance important heathland habitats in the borough.

#### **Dartford Warbler (*Sylvia undata*)**

#### **Woodlark (*Lullula arborea*)**

#### **Nightjar (*Caprimulgus europaeus*)**

Status: The Thames Basin Heaths Special Protection area (SPA) was created to protect these three threatened heathland birds. Nightjars are a UKBAP priority species. Dartford Warblers and Woodlarks are listed on Schedule 1 of the Wildlife and Countryside Act 1981. These species are found in the south of the borough in heathland and young conifer plantations.

Habitat requirements: Dartford warblers prefer long heather and gorse bushes to forage and nest. Nightjars prefer more open heath and will nest and forage in early plantation.

Woodlarks need occasional trees for territorial song and display and nest in heath and early plantation. All three species nest on or very near the ground.

#### **Brilliant Emerald Dragonfly (*Somatochlora metallica*)**

## DRAFT

Status: Nationally scarce species found in discrete areas of southeast England and Scotland.

Habitat requirements: Sheltered standing or slow-flowing waters, with some overhanging vegetation or trees.

### **Silver-studded Blue (*Plebejus argus*)**

Status: A UKBAP species. It has a restricted distribution and has declined through most of its range, but can occur in large numbers in suitable sites.

Habitat requirements: Lowland heathland, with eggs often laid in short or sparse vegetation. They have a close relationship with ants and will only lay eggs where there are suitable ant populations.

### **Adder (*Vipera berus*)**

Status: A UKBAP species, adder numbers are in decline and populations are becoming fragmented and isolated.

Habitat requirements: Associated with open habitats such as heathland, moorland and woodland edges. Adders hibernate in sheltered, dry places such as old rodent burrows or in fallen trees.

Heathland species info from: British Dragonfly Society (no date), Butterfly Conservation (no date), Woodland Trust (no date, E) and previous Bracknell Forest BAP.

## **10.2 UKBAP priority habitats**

- Lowland heathland
- Lowland raised bog (covered in wetland section)

## **10.3 National status**

In the lowlands, around 85% of heathland has been lost over the past 150 years. However, in more recent years, there has been conservation efforts to halt losses, restore and increase the area of heathland (The Wildlife Trusts, no date, D).

## **10.4 Heathland habitats in Bracknell Forest**

The underlying geology in Crowthorne and Sandhurst provides the conditions for heathland. It forms a patchwork with large areas of forestry and development. Forestry can provide benefits for biodiversity through rotational management of land. This provides a range of habitat niches which support heathland habitats and species. Bogs are a specialised habitat within heathland areas. Waterlogging can form wet heathland, ponds and true bog areas.

## **10.5 Threats**

The majority of heathland in the borough falls within Sites of Species Scientific Interest (SSSIs), though there are some patches outside of these designated sites. Threats or pressures on heathland, both within and outside of protected sites, can include:

- Lack of or inappropriate management
- Change in groundwater levels affecting bogs
- Nutrient enrichment e.g., dog fouling, air pollution, agricultural runoff
- Fires and dumping
- Disturbance of key species e.g., ground nesting birds

## DRAFT

- Persecution e.g., snakes and other species can be subject to persecution due to culturally inherited fears

### Impacts of climate change on priority habitats

Higher temperatures and more frequent droughts associated with climate change may affect the hydrological conditions within heathlands and the frequency of fires. This may change the balance of species. Warmer temperatures may also cause grass species to become more dominant. Some heathland species may benefit from warmer temperatures by expanding their range north. However, the fragmented nature of heathland means the habitat and its associated species may be vulnerable and struggle to adapt to climate change (Natural England and RSPB, 2019).

### 10.6 Opportunities

Heathland is a rare and valuable habitat and management and restoration is supported through agri-environment schemes. Biodiversity net gain is providing a driver for better quality habitats. While heathland is not typically directly affected by development, there may be opportunities to create and enhance heathland via off-site projects.

Suitable Alternative Natural Greenspaces are important in protecting the heathland habitats of the SPA. They provide opportunities for recreation away from the most important heathland sites which are sensitive to disturbance. New housing developments close to the SPA must contribute towards the enhancement of SANGs.

### 10.7 Targets

**40. Design and undertake regular surveys of key heathland sites/species to understand trends and feed into annual report (see General Themes target 5)**

Contributes to objective: **(B)**

**41. Enhance, restore or create 10ha of heathland**

Contributes to objective: **(C) (I)**

**(J)**

**42. Create 5 new bogs or ponds within heathland**

Contributes to objective: **(C) (I)**

**(J)**

**43. Promote SANGs to reduce pressure on SPA heathland**

Contributes to objective: **(G) (H)**

**44. Review access patterns at two heathland sites and adapt access management**

Contributes to objective: **(C) (G)**

**45. Run 20 educational sessions on heathland wildlife and conservation**

Contributes to objective: **(G)**

**46. Raise awareness of heathland biodiversity within annual events and articles (see General Themes target 8)**

Contributes to objective: **(G)**

## 11 Farmland Habitat Action Plan

### 11.1 Bracknell Forest BAP species for farmland

These species have been chosen to represent and promote the habitat. They will be included in projects to protect and enhance important farmland habitats in the borough. However, species representing other habitats, found within farmland, will also be relevant.

#### **Skylark (*Alauda arvensis*)**

Status: A UKBAP species and red listed in the UK under the Birds of Conservation Concern 5 (2021). Skylark numbers have fallen dramatically in the UK since the 1970s, but latest population trends indicate a small upturn.

Habitat requirements: Found in open farmland, preferring larger arable and grassland fields. Skylarks nest on the ground in short grass or crops.

#### **Barn Owl (*Tyto alba*)**

Status: Barn owl numbers have suffered declines and the species is thought to have been negatively affected by pesticides such as DDT in the 1950s and '60s. However, they are green listed under the Birds of Conservation Concern 5 (2021). Listed on Schedule 1 of the Wildlife and Countryside Act 1981 which provides additional protections from disturbance.

Habitat requirements: Barn owls hunt over open grassland for small mammals. They nest in old barns and buildings and hollows of trees.

Farmland species info from: BTO (no date, B), Game and Wildlife Conservation Trust (no date), RSPB (no date, A), Woodland Trust (no date, F), Stanbury and others (2021) and previous Bracknell Forest BAP.

### 11.2 UKBAP priority habitats

Arable field margins are a UKBAP priority habitat, though they are typically not mapped in priority habitat maps and are not included in TVERC habitat coverage data.

All terrestrial habitats have the potential to be part of farmland and therefore there is a high level of overlap with the other habitat action plans.

### 11.3 Farmland habitats in Bracknell Forest

The majority of farmland is found in the north of the borough where soils are neutral and clay. The area of farmed land is falling in the borough. According to Defra's June surveys of agriculture and horticulture, in 2021, 1,335ha of land in Bracknell Forest was farmed. Of this, 886ha is grassland (Defra, 2023, C).

### 11.4 Threats

Farmland biodiversity generally relies on less intensively managed areas around the edges of fields or uncultivated areas of the farm. These areas can be vulnerable to:

- Intensification of crop production
- Market forces leading to changes in land use, such as development, urbanisation or neglect
- Intensification of grazing
- Use of pesticides and fertilisers

## Impacts of climate change on priority habitats

Arable field margins managed for wildlife are the priority habitat most closely associated with farmland. These have been assessed as having a low sensitivity to climate change. Nonetheless, threats from climate change may include an increase in pests and diseases, and drier summers may cause changes in species composition and more bare ground (Natural England and RSPB, 2019).

### 11.5 Opportunities

Farmers are recognised as key stewards of our countryside, and many are keen to support wildlife provided it can be done whilst maintaining a livelihood. Agri-environment schemes provide financial incentives to improve biodiversity on farmland. Biodiversity net gain may provide farmers with a new source of income to manage uncultivated areas of habitat in their farm.

### 11.6 Targets

**47. Monitor trends in farmland bird species and feed into annual report (see General Themes target 5)**

Contributes to objective: **(B)**

**48. Monitor barn owl boxes**

Contributes to objective: **(B) (F)**

**49. Share information on new agri-environment schemes and monitor uptake**

Contributes to objective: **(C) (G) (H) (I)**

**(J)**

**50. Make management advice available to farmland landowners and horse owners**

Contributes to objective: **(C) (G) (I)**

**(J)**

**51. Raise awareness of farmland biodiversity within annual events and articles (see General Themes target 8)**

Contributes to objective: **(G)**

## 12 Urban Habitat Action Plan

### 12.1 Bracknell Forest BAP species for urban areas

These species have been chosen to represent and promote the habitat. They will be included in projects to protect and enhance important urban habitats in the borough. Species representing other habitats, found within urban areas, will also be relevant.

#### **Swift (*Apus apus*)**

Status: Added to the red list under the Birds of Conservation Concern 5 (2021). A factor in their decline is a loss of nesting sites as old buildings are renovated.

Habitat requirements: Swifts nest in roof cervices of buildings and forage for insects while on the wing (flying).

#### **Hedgehog (*Erinaceus europaeus*)**



## DRAFT

Status: A UKBAP species suffering a long historic decline in numbers. The decline is thought to relate to loss of hedgerow and woodland habitat, use of pesticides, and the impact of urbanisation, including impermeable fencing and road casualties. In urban areas, numbers are thought to be stabilising and may be recovering.

Habitat requirements: Can live in a variety of habitats including woodland, farmland, parks and gardens. Eats mainly invertebrates and needs areas to shelter during winter hibernation and during the day in the summer.

### **Cowslip (*Primula veris*)**

Status: After suffering declines due to agricultural intensification, it is now showing signs of recovery.

Habitat requirements: Can be found in open woods, meadows, pastures and roadsides.

### **Badgers**

Badgers are not a BAP species due to their widespread populations across the UK. However, their numbers are declining in Bracknell Forest. The main threats are the high levels of human activity in woodlands, road accidents, and development in surrounding fields.

Badgers need a diverse range of habitats for foraging and wide corridors. Actions to protect this species will also benefit other urban wildlife and habitats, and so badgers are given special consideration in this section.

Urban species info from: RSPB (no date, B), Woodland Trust (no date, G), Plantlife (no date) and previous Bracknell Forest BAP.

## **12.2 UKBAP priority habitats**

- Open mosaic habitat on previously developed land

All terrestrial habitats have the potential to be part of urban areas and therefore there is a high level of overlap with the other habitat action plans.

## **12.3 Urban habitats in Bracknell Forest**

The largest urban area in the borough is Bracknell Town. Other urban and residential areas include the town of Sandhurst and villages of Crowthorne, Binfield, Warfield and Winkfield.

All of the other habitats in the BAP may be found within urban areas. In addition, the following are some of the places that can be valuable for biodiversity:

- Parks and open spaces
- Verges next to roads, railways, cycleways and footpaths
- Sports pitches and play areas
- Private gardens
- Golf courses
- Churchyards and cemeteries
- Buildings

Settlements areas can support rare and declining species both within semi-natural habitats and the built environment. For example, swifts rely on buildings to provide their nest sites.

## DRAFT

Green infrastructure is the network of green spaces and features which provides many different benefits for people and wildlife. Green infrastructure is important in urban areas for many reasons, including allowing species to move and respond to climate change.

### 12.4 Threats

Urban biodiversity can be overlooked, and may be affected by the following factors:

- Changes in management regimes e.g., grass cutting
- Building maintenance and construction
- Development
- Invasive non-native species
- Isolation and fragmentation of habitats
- Persecution e.g., bats, snakes and stag beetles can be subject to persecution due to culturally inherited fears

### Impacts of climate change on biodiversity in urban areas

As with rural areas, urban habitats may change in composition as the climate changes. Species may shift in range and distribution. There may be changes in interactions between different species and between species and natural events (such as earlier spring weather). As urban habitats can be small and fragmented, the ability of species to move and adapt may be restricted (Natural England and RSPB, 2019).

### 12.5 Opportunities

Engaging support for urban species can be very successful in showing the link between people and nature at home, at work and during leisure. As urban areas encompass many different people, this urban action plan has a greater emphasis on community involvement, such as with schools, religious groups and businesses.

Green infrastructure within urban areas can provide new habitats for wildlife, while also improving urban areas for people and helping us adapt to climate change (Natural England and RSPB, 2019).

### 12.6 Targets

**52. Design and undertake regular surveys of key urban sites/species to understand trends and feed into annual report (see General Themes target 5)**

Contributes to objective: **(B)**

**53. Identify, protect and increase the number of active swift nest sites**

Contributes to objective: **(B) (F)**

**54. Plant or replace 50 large native urban trees**

Contributes to objective: **(C) (I)**

**(J)**

**55. Enhance 10 community spaces for wildlife**

Contributes to objective: **(C) (F) (G)**

**(J)**

**56. At least 10 private landowners to have enhanced their grounds for wildlife**

## DRAFT

Contributes to objective: (C) (F) (G)

**57. Secure wildlife enhancement features, including nest boxes, hibernation features and gaps for movement, within new and existing urban spaces**

Contributes to objective: (F)

**58. Planning permissions in areas with badger setts to ensure measures for badger protection**

Contributes to objective: (F) (H)

**59. All public greenspace management plans to include biodiversity actions**

Contributes to objective: (C) (F) (H)

**60. Make management advice available to urban landowners, such as businesses**

Contributes to objective: (C) (G)

**61. Raise awareness of urban and garden biodiversity, and opportunities for communities to get involved, within annual events and articles (see General Themes target 8)**

Contributes to objective: (G)

**62. Promote Local Access to Nature to residents**

Contributes to objective: (G)

## Appendix 1: Bracknell Forest Borough Information

### Area

10,943 hectares or 42 square miles.

### Location

Bracknell Forest lies 40km west of London, within the county of Berkshire. Bracknell Forest is one of 6 unitary authorities in Berkshire. It borders two of these: Wokingham and Royal Borough of Windsor and Maidenhead. The south of the borough also borders Hampshire and Surrey.

### Towns and Parishes

There are two towns: Bracknell and Sandhurst, and four parishes: Binfield, Crowthorne, Warfield and Winkfield. Each of these has a corresponding town or parish council.

### Geology and soils

Towards the south of the borough, the sandy Barton Beds, Bracklesham Beds and Bagshot Beds create acidic soils mixed with gravels. These support a landscape of heathland and conifer plantations. Towards the north, London Clay soils support a traditional lowland agricultural landscape of woodland, open fields and hedgerows. This meets in the centre of the borough where Bracknell town holds a mixture of soil types. This may include imported soil of chalk origin indicated by some of the plants found there.

### Hydrology

Two main rivers run through Bracknell Forest. The River Blackwater forms the borough's southern boundary, and The Cut meanders through the northern parishes. These receive water from small streams, namely the Bull Brook feeds water into The Cut and the Wish Stream flows into the River Blackwater.

## Land cover

Land use statistics for 2022 (Department for Levelling Up, Housing and Communities, 2022) indicate that 18% of Bracknell Forest is developed, including uses such as housing, offices, retail and roads (this figure excludes residential gardens). Agricultural land uses cover 26% and woodland and forestry 27%.

## Appendix 2: Glossary

**Agri-environment schemes:** Schemes that pay farmers and other land managers to manage their land in an environmentally friendly way (Natural England, 2009).

**Ancient woodland:** Areas that have been woodland continuously for at least the past 400 years.

**Biodiversity:** The variety of all life on Earth.

**Biodiversity Action Plan (BAP):** Biodiversity Action Plans were first developed following the 1992 United Nations 'Earth Summit'. Biodiversity Action Plans provide plans for the conservation of nature. Bracknell Forest Council launched the first BAP for the borough in 1997.

**Biodiversity Net Gain (BNG):** Approach to development that requires habitats for wildlife to be left in a measurably better state than before development.

**Biodiversity Opportunity Areas (BOAs):** BOAs identify areas with the greatest potential for habitat creation and restoration. This helps focus resources to where they will have the greatest nature conservation impact (Berkshire LNP, no date).

**Climate change adaptation:** Adjusting and adapting to cope with the impacts of a changing climate.

**Climate change mitigation:** Lowering emissions and/or increasing storage of greenhouse gases, which cause climate change.

**Designated sites:** In the context of the BAP, these are sites identified and protected for their nature conservation value. See Appendix 3.

**Environmental Land Management Schemes (ELMS):** New agricultural policy being brought in since the UK left the EU. See National Strategies under Appendix 5.

**Green infrastructure:** The network of green spaces and features which provide benefits for people and wildlife.

**Invasive non-native species (INNS):** Species which have been introduced to a new area by people, and go on to spread and cause harm to wildlife, the environment, human health and/or the economy.

**Joint Climate Action Board:** A board of key stakeholders in Bracknell Forest working to coordinate and track action towards net zero.

**Local Access to Nature:** The standard in the emerging Bracknell Forest Local Plan for green infrastructure features including biodiversity, habitat and passive open space of public value within 250 metres (5 minutes walk) of every home.

**Local Nature Recovery Strategy:** County-scale strategies with mapped priorities and actions to recover nature.

## DRAFT

**Local Plan:** Local Plans set out planning policies and proposals for a local area.

**Local Wildlife Site (LWS):** Sites of value for nature conservation at a county level. See Appendix 3.

**Net-zero greenhouse gas emissions:** A target to not add to the overall greenhouse gases in the atmosphere, by reducing emissions and increasing how much is absorbed and stored.

**Passive Open Space of Value (OSPV):** OSPV is land on which play, open space and recreational facilities are located. Passive OSPV comprises woodland, green corridors, SANG, nature areas, picnic areas and amenity open space.

**Site of Special Scientific Interest (SSSI):** Sites designated nationally as wildlife habitats. See Appendix 3.

**Suitable Alternative Natural Greenspace (SANG):** Open spaces which are improved for recreation. The aim is to help reduce the number of visitors to Special Protection Areas (SPAs) and reduce recreational pressure on these important habitats.

**UKBAP Species and Habitats:** Habitats and species first identified in the UKBAP to direct action for nature recovery. The government has a legal duty to publish the list under Section 41 of the NERC Act. Also known as priority species and habitats, Habitats and Species of Principle Importance, or Section 41 species and habitats.

**Veteran trees:** Trees with decay features which provide value for wildlife and heritage. Very old veteran trees are called ancient trees.

## Appendix 3: Designated sites

Designated or protected sites are identified for their nature conservation value (see map below). A summary is given in Section 4.6.

### Local Wildlife Sites (LWS)

Local Wildlife Sites are non-statutory sites of significant value for the conservation of wildlife at a county level. They are protected from harmful development through the planning system. LWS may support species and habitats of national significance or may be of more local importance. They are designated if they meet certain selection criteria, developed by local environmental records centres in line with guidance from Defra. Site may be selected for supporting species or habitats which are rare or special within the county. There are also criteria relating to diversity, connectivity, cultural significance and value for public engagement with nature.

Survey work is carried out by TVERC staff and experienced volunteers, with the aim of surveying sites every 10 years. This information is used to decide if a site should remain as an LWS. TVERC also reports annually to local authorities in Berkshire and Defra on how well LWS are being managed (TVERC, no date).

### Local Nature Reserve (LNR)

Local Nature Reserves are a statutory designation. Local authorities can designate a site as a Local Nature Reserve if it is important for wildlife, geology, education and enjoyment (Natural England and Defra, 2023).

### Sites of Special Scientific Interest (SSSI)

This is the primary designation relating to wildlife habitats in England and Wales. SSSI are

## DRAFT

areas of special interest for their flora, fauna, geological or physiological features. They are selected and monitored by Natural England.

SSSIs are given special protection from development and landowners must manage land within a SSSI appropriately to conserve its special features.

### **Special Protection Area (SPA)**

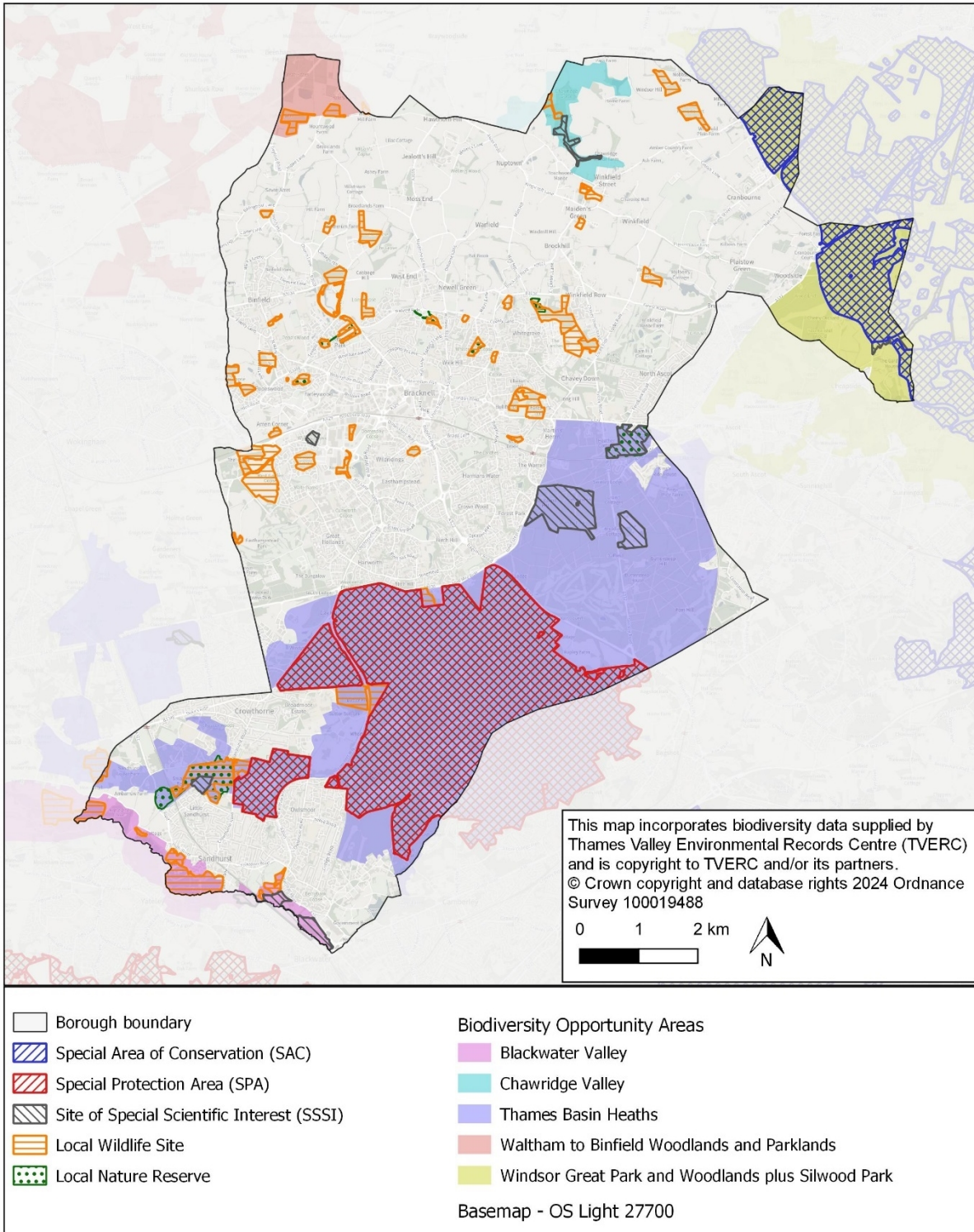
The origin of Special Protection Areas is the EC directive 79/409 (amended in 2009 to Directive 2009/147), known as the 'Birds Directive'. This required the government to designate the most suitable areas of habitat for rare and migratory birds listed in Annex I of the directive. The Thames Basin Heath Special Protection Area is partly within Bracknell Forest. It supports nationally important populations of Dartford Warbler, Nightjar and Woodlark.

### **Special Area of Conservation (SAC)**

The origin of Special Areas of Conservation is the EC Directive 92/43, known as the 'Habitats Directive'. This required the government to identify SACs to protect the habitats of the species listed in Annex II of the Directive. Part of the Windsor Forest and Great Park Special Area of Conservation lies within Bracknell Forest. The site supports the Violet Click Beetle, an extremely rare species throughout its European range. The area is one of only four locations in the UK containing dry oak dominated woodland on acid sandy soils, which are of high value for saproxylic invertebrates and lichens.

### **Other sites**

**Biodiversity Opportunity Areas** - BOAs identify key areas to focus nature conservation efforts at a landscape scale.



## Appendix 4: Bracknell Forest BAP Species Selection Process

The Bracknell Forest BAP species were reviewed ahead of the 2012-2018 BAP, when the plan became more habitat focused. The species have remained consistent since then, with the addition of 2 for this current BAP (2024-2029). This section describes the species selection process.

## DRAFT

Three criteria for habitats and species were taken from the Guidance for Local Biodiversity Action Plans Guidance Note 4 published by the UK Local Issues Advisory Group in 1996, as follows:

- UKBAP species
- Significance of local resource in UK context
- Distinctiveness

The species were also rated based on how well they can represent their habitat and be indicators of good habitat quality. However, there was also a need to select species that are distinctive and widespread to achieve benefits for the wider habitat.

### **Stage 1**

UKBAP/NERC species list was reviewed and any species with no records in the borough were removed. This left 243 species.

### **Stage 2**

Any other existing Bracknell Forest BAP species were added. These species were included as they had a good record base and conservation interest established in previous plans.

Each species was scored for the proportion of national resource found within the borough. This used a relative scale of 1-5 (a lower score for more common species). They were also scored for distinctiveness, scoring more highly species which are easy to identify and will be engaging to local people. This left 96 species.

### **Stage 3**

Each species was assigned a main habitat.

### **Stage 4**

An overall assessment was made of the remaining species grouped by habitat. The lists were considered in order of score, considering the existing BAP species and factors such as representing different aspects of the broad habitats.

### **2024 addition**

Two additional species have been added based on consultation with key stakeholders. These are harvest mouse and adder. These are both UKBAP species which are distinctive and charismatic. They therefore fit the original selection criteria.

## **Appendix 5: Relevant Legislation, Policies and Plans**

### **Legislation**

#### **Conservation of Habitats and Species Regulations 2017 (as amended)**

Link: <https://www.legislation.gov.uk/ukxi/2017/1012/contents/made>

These regulations are one of the pieces of domestic law that transposed the EEC Habitats Directive (Council Directive 92/43/EEC) and certain elements of the Wild Birds Directive (Directive 2009/147/EC). The regulations provide protection for European Protected Species (listed in Schedule 2). These include bats and great crested newts. It is illegal to disturb injure or kill individuals or to disturb or destroy the resting place or breeding site of such a species.

#### **Countryside and Rights of Way Act 2000**

Link: <https://www.legislation.gov.uk/ukpga/2000/37/contents>



## DRAFT

Provides for public access on foot to certain types of land, amends the law relating to public rights of way, increases measures for the management and protection of Sites of Special Scientific Interest and strengthens wildlife enforcement legislation, and provides for better management of Areas of Outstanding Natural Beauty (now known as National Landscapes).

### **Environment Act 2021**

Link: <https://www.legislation.gov.uk/ukpga/2021/30/contents/enacted>

Legislation to improve air and water quality, tackle waste, increase recycling, halt the decline of species, and improve our natural environment. The legislation brings in long term targets, Environmental Improvement Plans and establishes an Office for Environmental Protection to uphold environmental law. Parts most relevant for nature conservation include:

- Strengthened biodiversity duty
- Biodiversity net gain to ensure developments deliver at least 10% increase in biodiversity
- Local Nature Recovery Strategies to support a Nature Recovery Network
- Conservation Covenants
- Protected Site Strategies and Species Conservation Strategies to support the design and delivery of strategic approaches to deliver better outcomes for nature

### **Natural Environment and Rural Communities Act 2006**

Link: <https://www.legislation.gov.uk/ukpga/2006/16/contents>

Section 40 of the NERC 2006 Act has been updated by the Environment Act 2021 to bring in an 'enhanced biodiversity duty'. Section 40A brings in associated reporting for public authorities. An extract of Section 40 is:

"40 Duty to conserve and enhance biodiversity

(A1) For the purposes of this section "the general biodiversity objective" is the conservation and enhancement of biodiversity in England through the exercise of functions in relation to England.

(1) A public authority which has any functions exercisable in relation to England must from time to time consider what action the authority can properly take, consistently with the proper exercise of its functions, to further the general biodiversity objective.

(1A) After that consideration the authority must (unless it concludes there is no new action it can properly take)—

(a) determine such policies and specific objectives as it considers appropriate for taking action to further the general biodiversity objective, and

(b) take such action as it considers appropriate, in the light of those policies and objectives, to further that objective.

..."

Section 41 requires the Secretary of State to publish a list of Habitats and Species of Principle Importance for the purpose of conserving or enhancing biodiversity. In this plan these are referred to as UKBAP species and habitats.

### **Wildlife & Countryside Act 1981**

Link: <https://www.legislation.gov.uk/ukpga/1981/69/contents>

## DRAFT

Part 1 protects by law all wild birds, their nests and eggs. It is an offence, with certain exceptions, to:

- kill, injure or take any wild bird;
- take, damage or destroy the nest of a wild bird included in Schedule ZA1
- take, damage or destroy the nest of any wild bird while that nest is in use or being built; or
- take or destroy an egg of any wild bird

Birds listed in Schedule 1 (which includes Bracknell Forest BAP species kingfisher, barn owl, Dartford warbler and woodlark) have additional protection against disturbance. They are protected from disturbance while building a nest or while in, on or near a nest containing eggs or young.

Wild animals in schedule 5 are protected against killing and injury. These include the four species of reptile found in Bracknell Forest (adders, common lizards, grass snakes and slow worms).

Schedule 8 plants are protected. Part II of Schedule 9 lists plants which are non-native invasive, which by law must not be planted or caused to grow in the wild.

## Planning Policy

### National Planning Policy Framework (NPPF)

Link: <https://www.gov.uk/guidance/national-planning-policy-framework>

The National Planning Policy Framework (NPPF) sets out the government's planning policies for England and how these are expected to be applied. It was first published in 2012 and has been updated several times, most recently (at the time of writing) in December 2023. Of particular relevance are:

#### **2. Achieving sustainable development**

Paragraph 8 (c): an environmental objective – to protect and enhance our natural, built and historic environment; including making effective use of land, improving biodiversity, using natural resources prudently, minimising waste and pollution, and mitigating and adapting to climate change, including moving to a low carbon economy.

#### **11. Making effective use of land**

Paragraph 24: Planning policies and decisions should:

(a) encourage multiple benefits from both urban and rural land, including through mixed use schemes and taking opportunities to achieve net environmental gains – such as developments that would enable new habitat creation or improve public access to the countryside

(b) recognise that some undeveloped land can perform many functions, such as for wildlife, recreation, flood risk mitigation, cooling/shading, carbon storage or food production;

#### **12. Achieving well-designed and beautiful places**

Paragraph 136: Trees make an important contribution to the character and quality of urban environments, and can also help mitigate and adapt to climate change. Planning policies and decisions should ensure that new streets are tree-lined, that opportunities are taken to incorporate trees elsewhere in developments (such as parks and community orchards), that appropriate measures are in place to secure the long-term maintenance of newly-planted

## DRAFT

trees, and that existing trees are retained wherever possible. Applicants and local planning authorities should work with highways officers and tree officers to ensure that the right trees are planted in the right places, and solutions are found that are compatible with highways standards and the needs of different users.

### **13. Protecting Green Belt land**

Paragraph 142: The Government attaches great importance to Green Belts. The fundamental aim of Green Belt policy is to prevent urban sprawl by keeping land permanently open; the essential characteristics of Green Belts are their openness and their permanence.

### **15. Conserving and enhancing the natural environment**

Paragraph 180: Planning policies and decisions should contribute to and enhance the natural and local environment by:

- a) protecting and enhancing valued landscapes, sites of biodiversity or geological value and soils (in a manner commensurate with their statutory status or identified quality in the development plan);
- b) recognising the intrinsic character and beauty of the countryside, and the wider benefits from natural capital and ecosystem services – including the economic and other benefits of the best and most versatile agricultural land, and of trees and woodland;
- c) maintaining the character of the undeveloped coast, while improving public access to it where appropriate;
- d) minimising impacts on and providing net gains for biodiversity, including by establishing coherent ecological networks that are more resilient to current and future pressures;
- e) preventing new and existing development from contributing to, being put at unacceptable risk from, or being adversely affected by, unacceptable levels of soil, air, water or noise pollution or land instability. Development should, wherever possible, help to improve local environmental conditions such as air and water quality, taking into account relevant information such as river basin management plans; and
- f) remediating and mitigating despoiled, degraded, derelict, contaminated and unstable land, where appropriate

Paragraph 186: When determining planning applications, local planning authorities should apply the following principles:

- a) if significant harm to biodiversity resulting from a development cannot be avoided (through locating on an alternative site with less harmful impacts), adequately mitigated, or, as a last resort, compensated for, then planning permission should be refused;
- b) development on land within or outside a Site of Special Scientific Interest, and which is likely to have an adverse effect on it (either individually or in combination with other developments), should not normally be permitted. The only exception is where the benefits of the development in the location proposed clearly outweigh both its likely impact on the features of the site that make it of special scientific interest, and any broader impacts on the national network of Sites of Special Scientific Interest;
- c) development resulting in the loss or deterioration of irreplaceable habitats (such as ancient woodland and ancient or veteran trees) should be refused, unless there are wholly exceptional reasons and a suitable compensation strategy exists; and

## DRAFT

d) development whose primary objective is to conserve or enhance biodiversity should be supported; while opportunities to improve biodiversity in and around developments should be integrated as part of their design, especially where this can secure measurable net gains for biodiversity or enhance public access to nature where this is appropriate.

### **ODPM Circular 06/2005: Biodiversity and Geological Conservation – Statutory Obligations and their Impact within the Planning System**

Link:

[https://assets.publishing.service.gov.uk/government/uploads/system/uploads/attachment\\_data/file/7692/147570.pdf](https://assets.publishing.service.gov.uk/government/uploads/system/uploads/attachment_data/file/7692/147570.pdf)

This document covers a wide range of biodiversity issues including protected sites and protected species. Of particular relevance is:

The potential effects of a development, on habitats or species listed as priorities in the UK Biodiversity Action Plan (BAP), and by Local Biodiversity Partnerships, together with policies in the England Biodiversity Strategy, are capable of being a material consideration in the preparation of regional spatial strategies and local development documents and the making of planning decisions.

### **Emerging Bracknell Forest Local Plan (Bracknell Forest Council)**

The emerging Bracknell Forest Local Plan (BFLP) is the principal planning policy document for the Borough and will guide development in the Borough up to 2037. At the time of writing the BAP, the Local Plan is at examination stage and it is anticipated to be adopted in 2024. Once adopted it will replace many of the saved policies in the Bracknell Forest Local Plan (2002) and the Core Strategy (2008).

#### **Green infrastructure**

The borough's green infrastructure will be protected and enhanced...

#### **Thames Basin Heaths Special Protection Area**

New development which, either alone or in combination with other plans or projects, is likely to have a significant adverse effect on the integrity of the Thames Basin Heaths Special Protection Area (SPA) (as identified on the Policies Map) without appropriate avoidance and mitigation measures will be refused...

#### **Biodiversity**

1. Development in the Borough will be expected to achieve a minimum 10% net gain for biodiversity.
2. Development proposals will be expected to:
  - i. provide suitable ecological survey information and assessment to establish biodiversity net gains and the extent of any potential impact on ecological features. These may include ancient woodland, veteran trees, waterbodies, wildlife corridors (including river corridors), protected species, priority species or priority habitat that may be affected during and after development. This information shall be provided prior to the determination of an application;
  - ii. retain, protect, enhance and buffer ecological features and provide for their appropriate management;

## DRAFT

- iii. where possible, create new ecological features and incorporate provisions to maximise opportunities for biodiversity; and
  - iv. avoid fragmentation of habitats and create coherent ecological networks within the borough such as improvements to Biodiversity Opportunity Areas and Nature Recovery Networks.
3. Where the adverse impacts of development on biodiversity are identified, they must be proportionately addressed in accordance with the mitigation hierarchy of:
- i. avoidance;
  - ii. mitigation; and,
  - iii. compensation.
4. Where the requirements of this hierarchy cannot be met, development will be refused.
5. Where biodiversity has been removed or degraded (including through neglect), the Council will take the pre-development biodiversity value as what it is likely to have been had the removal or degradation not occurred.
6. The Council will secure effective avoidance, mitigation, monitoring and compensation measures which will be maintained for at least 30 years after the development has been completed through the imposition of planning conditions, conservation covenants or planning obligations as appropriate, including monitoring of the effectiveness of these measures.

### **Binfield Neighbourhood Plan 2015-2026 (Binfield Parish Council)**

Link: <https://binfieldparishcouncil.gov.uk/binfield-parish-council-neighbourhood-plan/>

#### **Objectives – Environment**

6. To protect and enhance wildlife corridors in order to improve biodiversity
7. Ensure that air pollution does not reach unacceptable levels
8. Protect and enhance local green areas and their biodiversity value to ensure local people continue to have access to nature
9. Ensure that development sustains or enhances the historic rural quality of the Parish's landscape and makes areas of rural character and historic parkland accessible to residents for their health and enjoyment as a result of development.

### **Bracknell Town Neighbourhood Plan 2016-2036 (Bracknell Town Council)**

Link: <https://www.bracknell-forest.gov.uk/planning-and-building-control/planning/planning-policy/neighbourhood-planning/bracknell-town-neighbourhood-area>

#### **Policy EV 4 Protection of Trees**

Development proposals will be expected to retain all trees in good condition and which possess amenity value, especially ancient trees, which, either individually or collectively, contribute to the sylvan character of the immediate area and the town in general.

#### **Policy EV 5 New Tree Planting**

Wherever possible and where appropriate, all new development, particularly at gateway locations, will be expected to incorporate tree planting within their landscaping proposals, including trees of an appropriate size and species of suitable longevity, that can make a significant contribution to enhancing the sylvan character of the town, as well as add to the visual amenity of the immediate area

## DRAFT

### **Policy EV 8 Watercourses and River Corridors**

Development proposals that provide improved public access to watercourses and river corridors will be supported where they maintain and enhance the quality of the environment.

### **Policy HO 5 Private Gardens: Green infrastructure and biodiversity networks**

On all future residential development, including any infill development, the configuration of private gardens and their means of enclosure should provide a degree of connectivity to enable wildlife such as hedgehogs to travel between gardens and onto any adjacent areas of green space.

### **Crowthorne Neighbourhood Plan 2018-2036 (Crowthorne Parish Council)**

Link: <https://www.bracknell-forest.gov.uk/planning-and-building-control/planning/planning-policy/neighbourhood-planning/crowthorne-neighbourhood-plan>

### **Policy CR12**

Biodiversity Development proposals should take account of the protected and other notable biodiversity species in the neighbourhood area as set out in Appendix D of the Plan. Development proposals which would affect any of the natural assets as identified in Appendix D will be determined on the basis of the principles in paragraph 175 of the NPPF (2019). Wherever practicable, proposals should contribute to, increase and enhance the natural environment by providing additional habitat resources for wildlife and green spaces for the community.

Note: Appendix D refers to an appendix of the Crowthorne Local Plan which provides a summary of legally protected and notable species in Crowthorne Parish. It is not appended to this BAP report. All the documents can be downloaded from the link above.

### **Warfield Neighbourhood Plan 2013-2037 (Warfield Parish Council)**

Link: <https://www.warfieldparishcouncil.gov.uk/the-council/information/neighbourhood-plan/>

### **Policy WNP8: Enhancing Green Infrastructure**

The Parish's green and blue infrastructure will be protected and enhanced. The Warfield Green Infrastructure Network will be established and will include, but is not limited to, the features shown on the Green Infrastructure Policies Map.

Development proposals on land that adjoins the network should enhance its visual character and biodiversity and contribute to the maintenance and improvement of the network, including the ecological value of The Cut and Bull Brook. Opportunity to create a new Bridleway Circuit, as shown on the Policies Map, will be supported.

Proposals that lead to the loss of land or features that form part of the network, that reduce its environmental quality or will prejudice the completion of the comprehensive network will not be supported.

### **Policy WNP11: Protecting and Enhancing Heritage and Biodiversity**

B. Developments should provide net gains for biodiversity. Where effects are unavoidable then the proposals must show how these effects will be mitigated. Development proposals should contribute to and enhance the natural environment by ensuring the protection of local assets such as mature trees, hedgerows, woodland, the network of Local Nature Reserves in the south of the Parish and the provision of additional habitat for wildlife and green spaces for the community.

## **Winkfield Parish Neighbourhood Plan 2022-2037 (Winkfield Parish Council)**

Link: <https://www.bracknell-forest.gov.uk/planning-and-building-control/planning/planning-policy/neighbourhood-planning/winkfield-neighbourhood-plan>

### **Policy W8: Biodiversity and Wildlife Corridors**

A. As appropriate to their scale, nature and location development proposals are expected to deliver at least a 10% biodiversity net gain in addition to protecting existing habitats and species. Development proposals on or adjacent to the wildlife corridors identified in Figure 11.1 and on the Policy Map must demonstrate a layout and design which ensures that wildlife is not impeded in its movement along the corridor. Proposals to enhance the wildlife corridors or create new corridors are strongly encouraged.

B. The incorporation of design features into development proposals that encourage and promote local wildlife will be particularly supported.

C. As part of its requirements to demonstrate biodiversity net gain, development should be designed to retain trees, shrubs and hedgerows of arboricultural, habitat and amenity value on-site and to conserve and enhance connectivity to the wider green and blue infrastructure networks. New planting should consist of native species of trees, shrubs and grasses acting and designed to provide accessibility for wildlife.

D. Where practicable development proposals should incorporate sustainable urban drainage and natural flood management techniques.

## **National Strategies**

### **Environmental Improvement Plan**

Link: <https://www.gov.uk/government/publications/environmental-improvement-plan/environmental-improvement-plan-2023-executive-summary>

In 2018, the 25 Year Environment Plan set out the government's plans to improve the environment within a generation. In 2023 the government undertook the first 5-yearly review and published the Environmental Improvement Plan 2023. The apex goal is to halt the decline in biodiversity and achieve thriving plants and wildlife. This is one of 10 goals, with other goals including clean air, clean and plentiful water and mitigating and adapting to climate change.

### **Environmental Land Management**

Link: <https://www.gov.uk/government/publications/environmental-land-management-update-how-government-will-pay-for-land-based-environment-and-climate-goods-and-services/environmental-land-management-elm-update-how-government-will-pay-for-land-based-environment-and-climate-goods-and-services>

The government is undertaking a significant reform of agricultural policy and spending in England. Environmental Land Management (ELM) schemes will pay farmers to provide environmental goods and services alongside food production. There will be three schemes:

- Sustainable Farming Incentive (SFI) will pay farmers for sustainable farming practices that can protect and enhance the natural environment alongside food production, and also support farm productivity
- Countryside Stewardship (CS) will pay for more targeted actions relating to specific locations, features and habitats

## DRAFT

- Landscape Recovery will pay for bespoke, longer-term, larger scale projects to enhance the natural environment

### **Natural England – Vision, Mission and Priorities**

Link: <https://www.gov.uk/government/organisations/natural-england/about>

Natural England's vision is 'Thriving Nature for people and planet'.

They aim to achieve this through their mission 'Building partnerships for Nature's recovery'.

Natural England's priorities for 2020 to 2025 support their mission and the ambitions of the government's 25 Year Environment Plan. They aim for:

- a well-managed Nature Recovery Network across land, water and sea, which creates and protects resilient ecosystems rich in wildlife and natural beauty, enjoyed by people and widely benefiting society
- people connected to the natural environment for their own and society's wellbeing, enjoyment and prosperity
- Nature-based solutions contributing fully to tackling the climate change challenge and wider environmental hazards and threats
- improvements in the natural capital that drives sustainable economic growth, healthy food systems and prospering communities
- evidence and expertise being used by a broad range of partnerships, organisations and communities to achieve Nature recovery and enable effective regulation and accreditation
- being a values-led organisation that delivers excellent service standards to all partners, organisations and communities engaged in achieving Nature's recovery

### **Environment Agency – Priorities**

Link: <https://www.gov.uk/government/organisations/environment-agency/about>

The Environment Agency's priorities are to:

- work with businesses and other organisations to manage the use of resources
- increase the resilience of people, property and businesses to the risks of flooding and coastal erosion
- protect and improving water, land and biodiversity
- improve the way we work as a regulator to protect people and the environment and support sustainable growth

### **Ministry of Defence/ Defence Infrastructure Organisation**

Link: <https://www.gov.uk/guidance/defence-infrastructure-organisation-estate-and-sustainable-development>

MOD biodiversity targets are:

- to be an exemplar in the management of designated sites where compatible with military requirements
- to ensure natural environment requirements and best practice are fully integrated into the estate management



## DRAFT

- to contribute, as appropriate, to the UK Biodiversity Action Plan (and Country Biodiversity Strategies)

### **The Crown Estate**

Link: <https://www.thecrownestate.co.uk/about-us>

The Crown Estate's strategy focuses on:

- Net zero and energy security - Being a leader in supporting the UK towards a net zero carbon and energy-secure future
- Inclusive communities and economic growth - Helping create inclusive communities and support economic growth and productivity
- Nature and biodiversity - Taking a leading role in stewarding the UK's natural environment and biodiversity

### **Bracknell Forest Council Plans and Strategies**

#### **Council Plan 2023-2027**

Link: <https://www.bracknell-forest.gov.uk/council-and-democracy/strategies-plans-and-policies/council-plan-2023-2027>

Our vision for the borough is where we put residents first, working together to grow sustainable, resilient, and inclusive communities.

The Council Plan for 2023 to 2027 will focus on 3 borough priorities to achieve this ambition:

- Engaged and healthy communities
- Thriving and connected economy
- Green and sustainable environment

Within the green and sustainable environment priority, our ambitions for the borough are:

- There is collective action to address and adapt to the climate and biodiversity emergency
- Our green spaces and parks foster sustainability, biodiversity, and wellbeing
- Local transport networks provide choice in travel

#### **Parks and Open Spaces Strategy**

Link: <https://www.bracknell-forest.gov.uk/sites/default/files/2021-11/parks-and-open-spaces-strategy.pdf>

##### **Priorities**

3. Encourage the provision of new parks and open spaces to support achievement of sustainable development. Create links between existing parks and open spaces to extend green infrastructure networks.
4. Implement planned improvement works to sites designated as Suitable Alternative Natural Greenspaces (SANGs) to encourage residents to visit recreational areas outside of the Thames Basin Heaths Special Protection Area. Identify opportunities to extend the provision of SANGs.
6. Enhance the natural qualities of parks and open spaces. Protect and enhance biodiversity. Positively manage trees and woodlands, to include new planting to provide for future generations.

## DRAFT

7. Identify opportunities to increase the positive role that parks and open spaces can contribute to climate change mitigation (e.g. tree planting as part of carbon sequestration). Implement appropriate measures in support of climate change adaptation (e.g. ponds and scrapes).

### **Climate Change**

Link: <https://www.bracknell-forest.gov.uk/council-and-democracy/strategies-plans-and-policies/climate-change>

#### **Motion of 13 September 2023**

This council declares a climate and biodiversity emergency.

To that end, this council invites the Executive to:

1. Resolve to review, broaden and accelerate its Climate Change Strategy. To commit to achieve net-zero CO2 emissions as close to 2030 as possible.
2. Co-produce with the community a Community Climate Emergency Strategy. The aim will be to make the wider Bracknell Forest area net-zero as close to 2030 as possible.
3. Both strategies should be produced in a financially transparent way. They will demonstrate accountability, affordability and economic benefits with clear interim, smart targets.
4. Explore the feasibility of raising a Bracknell Forest Local Climate Bond. This will be to support decarbonisation projects throughout the borough.
5. Revise the Biodiversity Action Plan to include audits of the state of nature in the borough and to highlight local biodiversity threats due to climate change. Reports of these will be presented annually. Any expected ecological impacts will also be added to Executive and council reports.

#### **Climate Change Strategy 2020-2024**

The council's climate change strategy gives a strategic framework for tackling climate change in Bracknell Forest and is underpinned by a rolling action plan. This will be replaced by an updated strategy for 2024-2028.

Our objective will be to achieve this through 4 strategic principles:

- Working with partners
- Preserving the climate beneficial elements of the COVID-19 pandemic
- Working with schools and young people
- Preserving the natural environment sustainably in line with the Bracknell Forest plans

Our strategy has 2 main strands:

- Reduce carbon emissions that are under the council's control
- Influence and lead community action against climate change

### **Tree Strategy**

Link: <https://www.bracknell-forest.gov.uk/council-and-democracy/strategies-plans-and-policies/parks-and-countryside-strategies-and-policies>

## DRAFT

This strategy describes how the council will approach the management of trees, hedgerows, orchards and woodland in Bracknell Forest on public and private land. The adoption of this strategy provides a coordinated approach to the management of Council owned and private trees, while maintaining their individual character.

### **Rights of Way Improvement Plan (RoWIP2) 2017-2027**

Link: <https://www.bracknell-forest.gov.uk/council-and-democracy/strategies-plans-and-policies/parks-and-countryside-strategies-and-policies>

#### **Policy RoWIP 7: Sustainable Development**

Manage a countryside and access network that delivers benefits to health and well-being, economy and biodiversity...

7.2 Protect and enhance environment and biodiversity on PRow network...

### **Local Strategies**

#### **Berkshire Amphibian & Reptile Group**

The aim of BRAG is to try to help prevent the continuing decline of amphibians and reptiles in Berkshire in a number of ways including:

- Providing information and advice about reptiles and amphibians to the public, planners and developers.
- Recording, mapping and monitoring amphibian and reptile populations across the county.
- Providing training for volunteers in reptile and amphibian survey methods.
- Helping safeguard important sites

BRAG is a member of the ARG-UK network.

#### **Berkshire, Buckinghamshire and Oxfordshire Wildlife Trust (BBOWT) Strategic Plan 2021-2026**

Link: [https://issuu.com/bbowt/docs/bbowt\\_wilder\\_vision\\_2021-26\\_jul\\_2021?fr=sMDA2ZTQyNDc3Njc](https://issuu.com/bbowt/docs/bbowt_wilder_vision_2021-26_jul_2021?fr=sMDA2ZTQyNDc3Njc)

BBOWT's mission is to bring about nature's recovery through local action – in partnership with people from all sectors of society, working with councils, MP's landowners, farmers and people from across local communities.

To achieve this mission, BBOWT has the following goals:

1. Put nature into recovery  
Encouraging nature's recovery through joining up bigger, wilder, connected landscapes where nature can thrive
2. Empower people to act for nature  
Support and enable local communities to reconnect with and restore nature in their own neighbourhoods and beyond
3. Secure our future  
Making BBOWT secure and sustainable

#### **Berkshire Local Nature Partnership**

Link: <https://www.berkshirelnp.org/>

## DRAFT

The Berkshire Local Nature Partnership (BLNP) works together to create a sustainable, healthy and vibrant Berkshire by promoting the conservation and enhancement of nature and the benefits we receive from a healthy environment. The BLNP do this by:

- Creating a strategic vision for the natural environment in Berkshire
- Offering a single, unified voice for the natural environment in decision-making
- Improving awareness of the challenges and opportunities facing nature
- Providing a network of advice and expertise relating to the environment

### **Berkshire and South Bucks Bat Group**

Link: <http://berksbats.org.uk/>

The group's main aims are:

- To promote and further the conservation of bats and their habitats.
- To raise awareness of bats and their conservation status.

### **Binfield Environment Group**

Link: <https://binfieldeg.wixsite.com/binfieldeg/get-involved>

Binfield Environment Group (BEG) is a voluntary organisation, formed in 2017 by residents who care about the local environment and want to help improve it.

### **Blackwater Valley Countryside Trust**

Link: <https://www.bvct.org.uk/about-us/>

The Blackwater Valley Countryside Trust was founded in 2006 by enthusiasts who are passionate about the people and wildlife of the Blackwater Valley.

BVCT's aims are to enhance the environment for both people and wildlife by:

1. Promoting public access to the countryside by means of a programme of events, including walks and talks
2. Involving people in their valley and the wildlife on their doorstep
3. Identifying improvement ideas, creating projects and raising funds to progress them
4. Encouraging a sense of belonging in the Blackwater Valley

### **Bracknell Conservation Volunteers**

Link: <http://www.bracknellcv.org.uk/index.html>

Bracknell Conservation Volunteers are a friendly and informal group of local adults who carry out conservation work and practical tasks to promote wildlife and enhance the local environment.

### **Bracknell Forest Natural History Society**

Link: <http://www.bfnathistsoc.org.uk/index.html>

The Society is for everyone interested in nature and its conservation. The Society aims are to present and share information about the Natural World, to increase awareness about its importance and to work to increase the biodiversity of local wildlife habitats.

### **Crowthorne Village Action Group**

Link: <https://www.cvag.org.uk/>

CVAG is a non-political residents association, seeking to balance the pressures for additional homes with conserving those features which make Crowthorne such a lovely place to live.

## DRAFT

### **Forestry England Thames Basin Heaths Forest Plan**

Link: <https://www.forestryengland.uk/forest-planning/thames-basin-heaths-forest-plan>

The objectives of the management plan include:

- Contribute to stopping the long-term decline in the number of woodland birds by 2020.
- Maintain SPA bird populations (nightjar, woodlark and Dartford warbler).

### **Hedge and Woodland Conservationists**

Link: <https://bracknellforestgetinvolved.org.uk/listing/hawcs/>

HAWCs aims to...

- Keep the ancient crafts of hedgelaying and coppicing alive
- Conserve and maintain hedgerows, woodlands, and rights of way for the benefit of the public and the wildlife which depends on them
- Educate the public in the principles and practice of nature conservation

### **Loddon Catchment Partnership – Catchment Priorities**

Link:

<https://storymaps.arcgis.com/collections/4328b25bc06947889a21710cbefcca4e?item=5>

Protecting and enhancing our landscapes

- Identifying habitat improvements - taking a strategic approach to deliver habitat enhancements across the catchment;
- Implementing habitat enhancements - delivering habitat enhancements in priority areas across the catchment;
- Improving fish passage - identifying and tackling barriers to fish;
- Keeping rivers cool - using tree shade to keep small rivers cool in the face of a changing climate;
- Tackling invasive non-native species - taking a catchment-based approach to the management of INNS.

### **Loddon Fisheries and Conservation Consultative**

Link: <https://lfcc.org.uk/about-us>

The three main objectives of the LFCC are:

- 1) Represent fisheries, angling and conservation interests.
- 2) Work with others to protect and improve for future generations stillwaters, rivers and canals in the Loddon catchment.
- 3) Increase awareness of fisheries, angling and conservation through collection and sharing of best practice information.

### **Maidenhead to Teddington Catchment Partnership**

Link: <https://www.thames21.org.uk/catchment-partnerships/maidenhead-to-teddington/>

The Maidenhead to Teddington catchment partnership meets regularly to discuss the sustainable management of land and water in the Lower Thames catchment and to balance the environmental, economic and social demands. The partnership works together to:

## DRAFT

- Engage local communities in understanding, valuing, caring for, and enjoying their river catchment
- Enhance, improve and protect the water environment by collaboratively delivering river and valley improvement projects
- Share information, skills and bring people together working catchment-wide with multiple organisations.

### **Moor Green Lakes Group**

Link: <https://www.mglg.org.uk/>

The Moor Green Lakes Group (MGLG) was established in 1993 as an organisation to help manage the Moor Green Lakes Nature Reserve in Berkshire, England. The group's aims are:

- To improve the Reserve for wildlife
- Record and monitor that wildlife
- Enhance the facilities of the Reserve for members of the Moor Green Lakes Group and other visitors

### **Warfield Environment Group**

Link: <https://warfieldenvgroup.wordpress.com/committee/>

The aim of the group is to encourage the community of Warfield to take pride in their environment by involving groups, individuals and businesses in a variety of projects to enhance habitats for wildlife and to encourage conservation, recycling and the clearing of litter.

### **Wildlife in Ascot**

Link: <https://www.wildlifeinascot.org/about-us>

Mission: Taking responsibility for protecting and encouraging wildlife in and around Ascot

Goals:

- We want to create good habitats and still have beautiful gardens.
- We want to have fun, get to know our neighbours and learn about the world on our doorstep.
- We want to manage the "Green corridors" in our area which we have succeeded in getting recognised in our neighbourhood plan.
- We want to improve the eco-system of our area by highlighting opportunities and raising concerns as necessary to try to ensure that future development does not have a negative impact on the environment and enhances habitats where possible.

## References

A link is included directly under each section of Appendix 5: Relevant Legislation, Policies and Plans. The following references are relevant for the rest of the document:

Bat Conservation Trust (2010). Noctule bat.

[https://cdn.bats.org.uk/uploads/pdf/About%20Bats/noctule\\_11.02.13.pdf?v=1541085182&\\_gl=1\\*a2rihm\\*\\_ga\\*MTI5NTE4NDA1Mi4xNjU5MTA3MzM3\\*\\_ga\\_G28378TB9V\\*MTcwMzI0NTAxNy4xNy4xLjE3MDMyNDUwOTIuMC4wLjA](https://cdn.bats.org.uk/uploads/pdf/About%20Bats/noctule_11.02.13.pdf?v=1541085182&_gl=1*a2rihm*_ga*MTI5NTE4NDA1Mi4xNjU5MTA3MzM3*_ga_G28378TB9V*MTcwMzI0NTAxNy4xNy4xLjE3MDMyNDUwOTIuMC4wLjA) (accessed 01/02/2024).

## DRAFT

Berkshire Local Nature Partnership (no date). Biodiversity Opportunity Areas. <https://www.berkshirelnp.org/what-we-do/strategy/biodiversity-opportunity-areas> (accessed 23/02/2024).

British Dragonfly Society (no date). Where to See Brilliant Emerald. <https://british-dragonflies.org.uk/species-map/brilliant-emerald/> (accessed 05/02/2024).

BTO (no date, A). Bird Facts: Bullfinch. <https://www.bto.org/understanding-birds/birdfacts/bullfinch> (accessed 01/02/2024).

BTO (no date, B). Bird Facts: Skylark. <https://www.bto.org/understanding-birds/birdfacts/skylark> (accessed 05/02/2024).

Bumblebee Conservation Trust (2021). Why bumblebees need our help. <https://www.bumblebeeconservation.org/why-bees-need-our-help/> (accessed 01/02/2024).

Butterfly Conservation (no date). Silver-studded Blue. [https://butterfly-conservation.org/sites/default/files/silver-studded\\_blue-psf.pdf](https://butterfly-conservation.org/sites/default/files/silver-studded_blue-psf.pdf) (accessed 05/02/2024).

Defra (2023, A). Environmental Land Management (ELM) update: how government will pay for land-based environment and climate goods and services. <https://www.gov.uk/government/publications/environmental-land-management-update-how-government-will-pay-for-land-based-environment-and-climate-goods-and-services/environmental-land-management-elm-update-how-government-will-pay-for-land-based-environment-and-climate-goods-and-services> (accessed 01/02/2024).

Defra (2023, B). Calculate biodiversity value using the biodiversity metric. <https://www.gov.uk/guidance/biodiversity-metric-calculate-the-biodiversity-net-gain-of-a-project-or-development> (accessed 08/02/2024).

Defra (2023, C). Structure of the agricultural industry in England and the UK at June (Local Authority Breakdown). <https://www.gov.uk/government/statistical-data-sets/structure-of-the-agricultural-industry-in-england-and-the-uk-at-june> (accessed 05/02/2024).

Department for Levelling Up, Housing and Communities (2022). Land use in England, 2022. <https://www.gov.uk/government/statistics/land-use-in-england-2022> (accessed 15/02/2024).

Environment Agency and Natural England (2022). State of the water environment indicator B3: supporting evidence. <https://www.gov.uk/government/publications/state-of-the-water-environment-indicator-b3-supporting-evidence/state-of-the-water-environment-indicator-b3-supporting-evidence> (accessed 05/02/2024).

Freshwater Habitat Trust (no date). Species: Ragged-robin. <https://freshwaterhabitats.org.uk/species/ragged-robin-silene-flos-cuculi/> (accessed 01/02/2024).

Friends of the Earth (2023). Mapping English tree cover: results, ranking and methodology. <https://policy.friendsoftheearth.uk/insight/mapping-english-tree-cover-results-ranking-and-methodology> (accessed 26/02/2024).

Froglife (no date). Great Crested Newt. <https://www.froglife.org/info-advice/amphibians-and-reptiles/great-crested-newt/> (accessed 05/02/2024).

## DRAFT

Game and Wildlife Conservation Trust (no date). Skylark.

<https://www.gwct.org.uk/farming/big-farmland-bird-count/farmland-birds-to-count/skylark> (accessed 05/02/2024)

Hendry, L. (no date). Stag beetles: facts about the UK's largest beetle and where to see it.

<https://www.nhm.ac.uk/discover/stag-beetles.html> (accessed 01/02/2024).

HM Government (2023). Environmental Improvement Plan.

<https://assets.publishing.service.gov.uk/media/64a6d9c1c531eb000c64ffa/environmental-improvement-plan-2023.pdf> (accessed 06/02/2024).

Magnificent Meadows (no date). Devil's-bit scabious.

[http://www.magnificentmeadows.org.uk/assets/pdfs/Devils-bit\\_scabious.pdf](http://www.magnificentmeadows.org.uk/assets/pdfs/Devils-bit_scabious.pdf) (accessed 01/02/2024).

Mammal Society (no date, A). Species – Harvest Mouse.

<https://www.mammal.org.uk/species-hub/full-species-hub/discover-mammals/species-harvest-mouse/> (accessed 01/02/2024).

Mammal Society (no date, B). Species – Noctule Bat. <https://www.mammal.org.uk/species-noctule-bat/> (accessed 01/02/2024).

Natural England (2009). Farming with nature: Agri-environment schemes in action. Natural England, York, UK.

Natural England (2021). The Environment Act 2021 – a turning point for Nature.

<https://naturalengland.blog.gov.uk/2021/11/23/the-environment-act-2021-a-turning-point-for-nature/> (accessed 01/02/2024).

Natural England and Defra (2023). Local nature reserves: setting up and management.

<https://www.gov.uk/guidance/create-and-manage-local-nature-reserves> (accessed 14/02/2024).

Natural England and Forestry Commission (2023). Natural England and Forestry Commission: Our position on woodland creation.

<https://www.gov.uk/government/publications/our-position-on-woodland-creation-in-england/natural-england-and-forestry-commission-our-position-on-woodland-creation> (accessed 05/02/2024).

Natural England and RSPB (2019). Climate Change Adaptation Manual - Evidence to support nature conservation in a changing climate, 2nd Edition. Natural England, York, UK.

Office for National Statistics (2022). Habitat extent and condition, natural capital, UK: 2022.

<https://www.ons.gov.uk/economy/environmentalaccounts/bulletins/habitatextentandconditionnaturalcapitaluk/2022> (accessed 05/02/2024).

Plantlife (no date). Cowslip. <https://www.plantlife.org.uk/plants-and-fungi/cowslip/> (accessed 15/02/2024).

Plantlife International (2023). Review of trends in grasslands across the UK.

<https://www.plantlife.org.uk/wp-content/uploads/2023/07/Plantlife-report-1-Status-Trends-and-Definitions-of-UK-Grasslands.pdf> (accessed 06/02/2024).

PTES (no date). Traditional Orchards. <https://ptes.org/campaigns/traditional-orchard-project/> (accessed 01/02/2024).



## DRAFT

Reid, C., Hornigold, K., McHenry, E., Nichols, C., Townsend, M., Lewthwaite, K., Elliot, M., Pullinger, R., Hotchkiss, A., Gilmartin, E., White, I., Chesshire, H., Whittle, L., Garforth, J., Gosling, R., Reed, T. and Hugi, M. (2021). State of the UK's Woods and Trees 2021, Woodland Trust.

RSPB (no date, A). Barn Owl. <https://www.rspb.org.uk/birds-and-wildlife/barn-owl> (accessed 05/02/2024).

RSPB (no date, B) Swift. <https://www.rspb.org.uk/birds-and-wildlife/swift> (accessed 05/02/2024).

Stanbury, A., Eaton, M., Aebischer, N., Balmer, D., Brown, A., Douse, A., Lindley, P., McCulloch, N., Noble, D., and Win I. (2021). The status of our bird populations: the fifth Birds of Conservation Concern in the United Kingdom, Channel Islands and Isle of Man and second IUCN Red List assessment of extinction risk for Great Britain. British Birds 114: 723-747. Available online at <https://britishbirds.co.uk/content/status-our-bird-populations> (accessed 05/02/2024).

The Wildlife Trusts (no date, A). Bullfinch. <https://www.wildlifetrusts.org/wildlife-explorer/birds/finches-and-buntings/bullfinch> (accessed 01/02/2024).

The Wildlife Trusts (no date, B). Wild Service Tree. <https://www.wildlifetrusts.org/wildlife-explorer/trees-and-shrubs/wild-service-tree> (accessed 01/02/2024).

The Wildlife Trusts (no date, C). Great crested newt. <https://www.wildlifetrusts.org/wildlife-explorer/amphibians/great-crested-newt> (accessed 05/02/2024).

The Wildlife Trusts (no date, D). Heathland and Moorland. <https://www.wildlifetrusts.org/habitats/heathland-and-moorland> (accessed 05/02/2024).

TVERC (2023). Habitat and Land Use data. Biodiversity data supplied by Thames Valley Environmental Records Centre (TVERC) is copyright to TVERC and/or its partners.

TVERC (no date). Local Wildlife Sites. <https://www.tverc.org/cms/content/local-wildlife-sites> (accessed 14/02/2024).

Woodland Trust (no date, A). Wild Service Tree. <https://www.woodlandtrust.org.uk/trees-woods-and-wildlife/british-trees/a-z-of-british-trees/wild-service-tree/> (accessed 01/02/2024).

Woodland Trust (no date, B). Hedgerows. <https://www.woodlandtrust.org.uk/trees-woods-and-wildlife/habitats/hedgerows/> (accessed 01/02/2024).

Woodland Trust (no date, C). Brown Trout. <https://www.woodlandtrust.org.uk/trees-woods-and-wildlife/animals/fish/brown-trout/> (accessed 05/02/2024).

Woodland Trust (no date, D). Kingfisher. <https://www.woodlandtrust.org.uk/trees-woods-and-wildlife/animals/birds/kingfisher/> (accessed 05/02/2024).

Woodland Trust (no date, E). Adder. <https://www.woodlandtrust.org.uk/trees-woods-and-wildlife/animals/reptiles-and-amphibians/adder/> (accessed 05/02/2024).

Woodland Trust (no date, F) Barn Owl. <https://www.woodlandtrust.org.uk/trees-woods-and-wildlife/animals/birds/barn-owl/> (accessed 05/02/2024).

## DRAFT

Woodland Trust (no date, G) Hedgehog. <https://www.woodlandtrust.org.uk/trees-woods-and-wildlife/animals/mammals/hedgehog/> (accessed 05/02/2024).